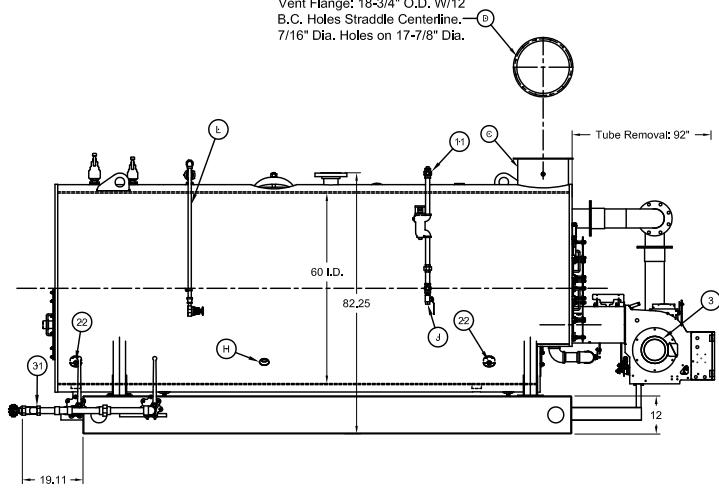


MAJOR COMPONENTS			SERVICE CONNECTIONS		NOTES	
1	Control Panel	21	N/A	A		* Boiler is Designed and Constructed in Accordance with the ASME Boiler and Pressure Vessel Code - Section I High Pressure Boiler * This Unit Complies with Insurance Underwriters Requirement for Factory Mutual & GE Global Asset Protection * The Boiler Package is painted with High Temperature Light Blue Enamel * The Burner Operation is Full Modulating * The Boiler Burner Package has a UL Label * All Valves to be Mounted, Hydro Tested, & Listed on All Applicable Forms This Boiler is Provided with: 1. Control Circuit Transformer 2. Welded End Caps on Basersals
2	Entrance Panel	22	Handholes (6) 3.25" x 4.5"	B	Electric - Main Power Supply - 460 / 3 / 60	
3	Blower Motor - 5 HP	23	Front Sight Port	C	N/A	
4	N/A	24	Rear Sight Port	D	Exhaust Vent Pipes - 16" OD	
5	Combustion Safeguard Control - CB-780E	25	Burner	E	Vent Flange (See Detail)	
6	Flame Scanner	26	Alarm	F	Steam Outlet - 4" 300# R.F. Flange	
7	Pressure Control - Operating Limit	27	Low Fire Hold Control	G	N/A	
8	Pressure Control - High Limit (Manual Reset)	28	N/A	H	Feedwater - (2) 1.5 NPT	
9	Pressure Control - Modulating	29	N/A	I	Bottom Blowdown - (2) 1.5 NPT	
10	Main Low Water Column - Levelmaster II	30	N/A	J	Water Column Blowdown - 0.75 NPT	
11	Auxiliary Low Water Cutoff - Warrick 3C-2	31	Bottom Blowdown Piping	K	Gauge Glass Blowdown - 0.25 NPT	
12	Steam Gauge	32	Surface Blowdown Piping	L	Surface Blowoff - 1.0 NPT	
13	N/A	33	N/A	M	N/A	
14	Stack Thermometer	34	N/A	N	Main Gas - TBD	
15	Safety Valve (2) Set @ 150#	35	FGR Duct	O	Minimum Inlet Gas Pressure Required is 34" W.C. Maximum Inlet Gas Pressure Required is TBD	
16	Gas Train	36	N/A	P	Rating - 6.276 (cfr) MBtu Oil Inlet - 0.75 NPT (75 PSI Required at Inlet) Rating - 44.8 gph	
17	Fuel Oil Piping Terminal	37	N/A	Q	Oil Outlet - 0.75 NPT	
18	Fuel Oil Pump Assembly	38	N/A	R	Chemical Feed - 1.0 NPT	
19	Manway 12" x 16"	39	N/A	S	Safety Valve - (1) Kumble 6010GFE 1.25X1.5 FPT (Outlet)	
20	Burner Junction Box	40	N/A	T	Safety Valve - (1) Kumble 6010FEE 1 x 1.25 FPT (Outlet)	

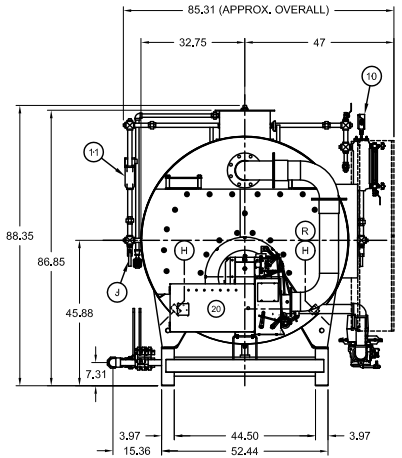
BOILER SPECIFICATIONS

Boiler Designation - GBEX PREMIUM 150 200
 Design Pressure - 150 ST
 Design Rating - 150 hp
 Emissions - 30 ppm
 Fuel(s) - No. 2 Oil and Natural Gas
 Steam Capacity - 5,175 # steam @ 212 deg F
 Firetube Heating Surface - 518 Sq. Ft.
 Dry Weight - 11,750 LB
 Water Weight - 7,420 LB
 Gallons (Operating) - 890
 Code Compliance - FM, GE Gap, CSD-1, Former IRI

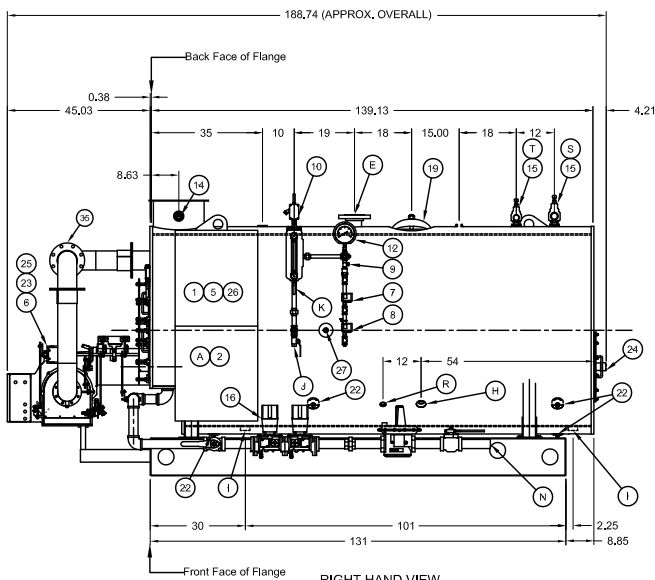
Vent Flange: 18-3/4" O.D. W/12 B.C. Holes Straddle Centerline, 7/16" Dia. Holes on 17-7/8" Dia.



LEFT HAND VIEW



FRONT VIEW



RIGHT HAND VIEW

THIS DRAWING IS PROPERTY OF CLEAVERBROOKS DIVISION. IT IS SUBJECT TO CHANGE WITHOUT NOTICE, AND IS NOT TO BE COPIED OR USED IN ANY WAY DETRIMENTAL TO THE COMPANY.

REVISIONS	

CAUTION

DIMENSIONS SHOWN ARE APPROXIMATE AND SHOULD NOT BE USED IN RESTRICTIVE LAYOUTS OR TO PREFABRICATE ASSEMBLIES UNLESS CLEAVERBROOKS HAS BEEN CONSULTED. IT IS STRONGLY RECOMMENDED THAT THE CUSTOMER REQUEST AS-BUILT CERTIFIED DRAWINGS FOR THESE CASES.

WARNING

LIFTING LUGS PROVIDED ON THE VESSEL SHALL ONLY BE USED TO LIFT THE VESSEL WHEN IT IS DRY.

WARNING

CHANGES, MODIFICATIONS OR ALTERATIONS ARE STRICTLY PROHIBITED.

CHANGES TO THIS DRAWING AND SUBSEQUENT MODIFICATION OF EQUIPMENT COULD RESULT IN DAMAGE TO THE EQUIPMENT AND/OR SERIOUS PERSONAL INJURY.

Name	Address
DIMENSIONAL DIAGRAM	
SIZE	SHT 01 OF 01

SCALE	N.T.S.	
DATE		
DRAWN	LES	CBEX-P 200 150 150ST CAPACITY 460 3 60 3 FM&GAP 2002 2002 2002 2002
CHECKED BY	DJM	00