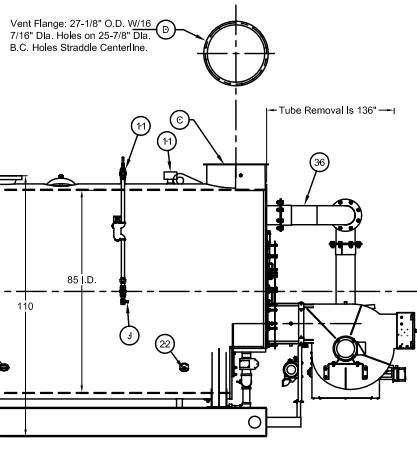
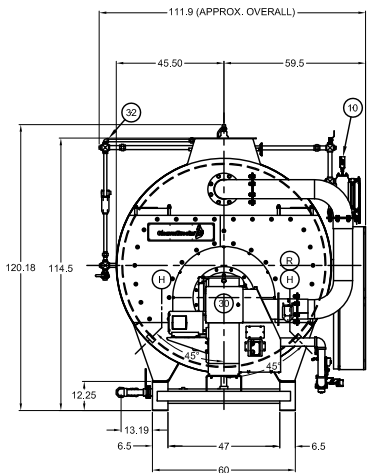


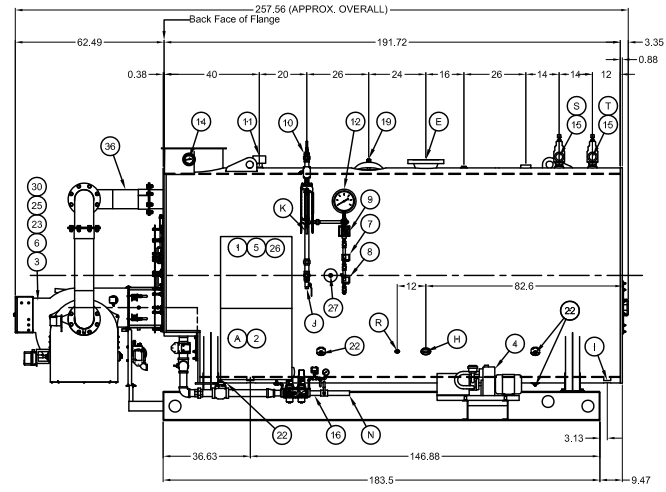
MAJOR COMPONENTS		SERVICE CONNECTIONS		NOTES
1	Control Panel	21	N/A	* Boiler is Designed and Constructed in Accordance with the ASME Boiler and Pressure Vessel Code - Section 1 High Pressure Boiler * This Unit Complies with Insurance Underwriters Requirement for Factory Mutual & GE Global Asset Protection * The Boiler Package is painted with High Temperature Light Blue Enamel * The Burner Operation is Full Modulating * The Boiler Burner Package Has A UL Label * All Valves to be Mounted, Hydro Tested, & Listed on All Applicable Forms  This Boiler is Provided with: 1. Control Circuit Transformer 2. Welded End Caps on Basereals
2	Entrance Panel	22	N/A	
3	Blower Motor - 20 HP	23	Front Sight Port	
4	Air Compressor - 5 HP	24	Rear Sight Port	
5	Combustion Safeguard Control - CB-780E	25	Burner	
6	Flame Scanner - Infrared	26	Alarm	
7	Pressure Control - Operating Limit	27	Low Fire Hold Control	
8	Pressure Control - High Limit (Manual Reset)	28	N/A	
9	Pressure Control - Modulating	29	N/A	
10	Main Low Water Column - Levelmaster II	30	Burner Junction Box	
11	Auxiliary Low Water Cutoff - Warrick 3C-2	31	Bottom Blowdown Piping	
12	Steam Gauge	32	Surface Blowdown Piping	
13	N/A	33	N/A	
14	Stack Thermometer	34	N/A	
15	Safety Valve (2) Set @ 150#	35	N/A	
16	Gas Train	36	FGR Duct	
17	Fuel Oil Piping Terminal	37	N/A	
18	Fuel Oil Pump Assembly	38	N/A	
19	Manway 12" x 16"	39	N/A	
20	N/A	40	N/A	
		A	Electric - Main Power Supply - 460 / 3 / 60	
		B	N/A	
		C	Exhaust Vent Pipe - 24" OD	
		D	Vent Flange (See Detail)	
		E	Steam Outlet - 8" 300# R.F. Flange	
		F	N/A	
		G	N/A	
		H	Feedwater - (2) 2.5 NPT	
		I	Bottom Blowdown - (2) 2.0 NPT	
		J	Water Column Blowdown - 0.75 NPT	
		K	Gauge Glass Blowdown - 0.25 NPT	
		L	Surface Blowoff - 1.0 NPT (W/ Collector Pipe)	
		M	N/A	
		N	Main Gas - TBD	
		O	Minimum Inlet Gas Pressure Required: 79" W.C. Maximum Inlet Gas Pressure Required PSI: TBD Rating - 20,920 (cft) MBtu	
		P	Oil Inlet - 0.75 NPT (75 PSI Required at Inlet) Rating - 149.4 gph	
		Q	Oil Outlet - 0.75 NPT	
		R	Chemical Feed - 1.0 NPT	
		S	Safety Valve - (1) Kunkle 6010JHE 1.5 x 2.0 FPT (Outlet)	
		T	Safety Valve - (1) Kunkle 6010JHE 2.0 x 2.5 FPT (Outlet)	
			BOILER SPECIFICATIONS	
			Boiler Designation - CBEX ELITE 200 500	
			Design Pressure - 150 ST	
			Design Rating - 500 hp	
			Emissions - 30 ppm	
			Fuel(s) - No. 2 Oil and Natural Gas	
			Steam Capacity - 17,250# steam @ 212 deg F	
			Firetube Heating Surface - 1325 Sq. Ft.	
			Dry Weight - 24,600 LB	
			Water Weight - 16,600 LB	
			Gallons (Operating) - 1,991	
			Code Compliance - FM, GE Gap, NFPA-85, Former IRI	



LEFT HAND VIEW



FRONT VIEW



RIGHT HAND VIEW

THIS DRAWING IS PROPERTY OF CLEAVER-BROOKS DIVISION. IT IS SUBJECT TO CHANGE WITHOUT NOTICE, AND IS NOT TO BE COPIED OR USED IN ANY MANNER DETRIMENTAL TO THE COMPANY.

REVISIONS	

**CAUTION**

DIMENSIONS SHOWN ARE APPROXIMATE AND SHOULD NOT BE USED IN RESTRICTIVE LAYOUTS OR TO PREFABRICATE ASSEMBLIES UNLESS CLEAVER-BROOKS HAS BEEN CONSULTED. IT IS STRONGLY RECOMMENDED THAT THE CUSTOMER REQUEST AS-BUILT CERTIFIED DRAWINGS FOR THESE CASES.

**WARNING**

LIFTING LUGS PROVIDED ON THE VESSEL SHALL ONLY BE USED TO LIFT THE VESSEL WHEN IT IS DRY.

**WARNING**

CHANGES, MODIFICATIONS OR ALTERATIONS ARE STRICTLY PROHIBITED.

CHANGES TO THIS DRAWING AND SUBSEQUENT MODIFICATION OF EQUIPMENT AND/OR SERIOUS PERSONAL INJURY.

Name	Address
DIMENSIONAL DIAGRAM	
SIZE	SHT 01 OF 01

SCALE	N.T.S.																
DATE																	
DRAWN	LES	<table border="1"> <tr> <td>CBEX PREM</td> <td>200</td> <td>500</td> <td>150ST</td> <td>CAPACITY</td> </tr> <tr> <td>460</td> <td>3</td> <td>60</td> <td>3</td> <td>FM&amp;GAP</td> </tr> <tr> <td> </td> <td> </td> <td> </td> <td> </td> <td> </td> </tr> </table>	CBEX PREM	200	500	150ST	CAPACITY	460	3	60	3	FM&GAP					
CBEX PREM	200	500	150ST	CAPACITY													
460	3	60	3	FM&GAP													
CHECKED BY	DJM	DRWG. NO.															
		00															