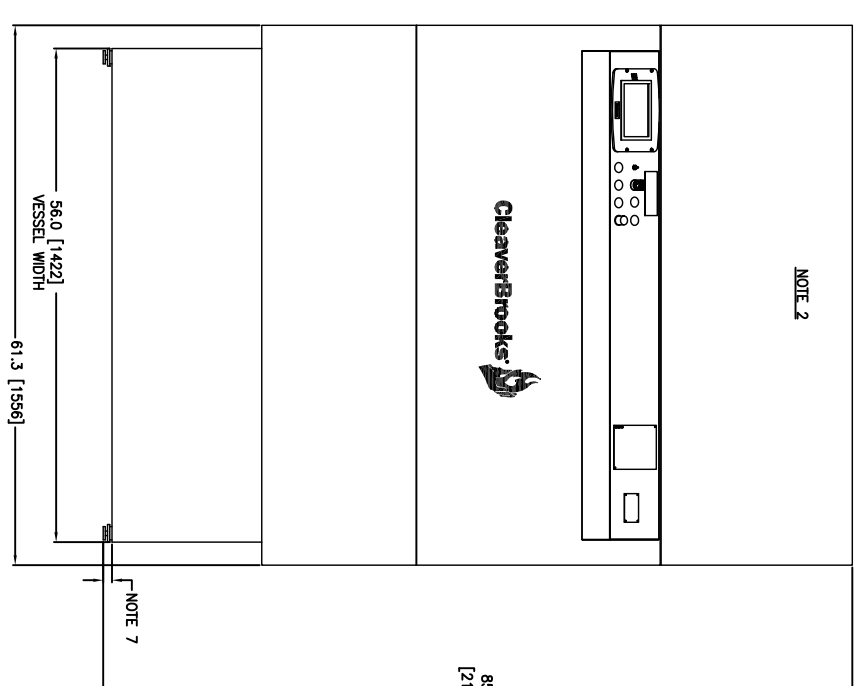
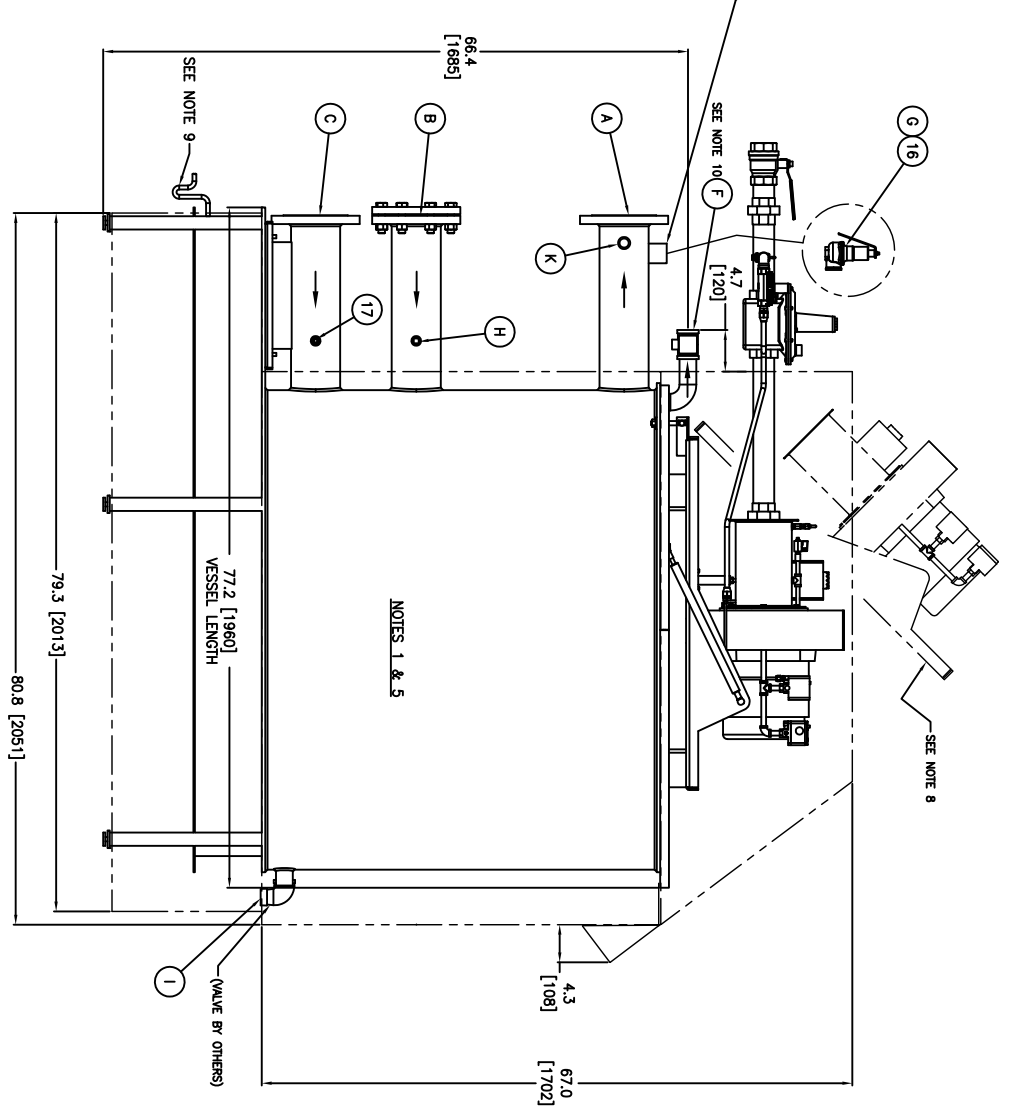
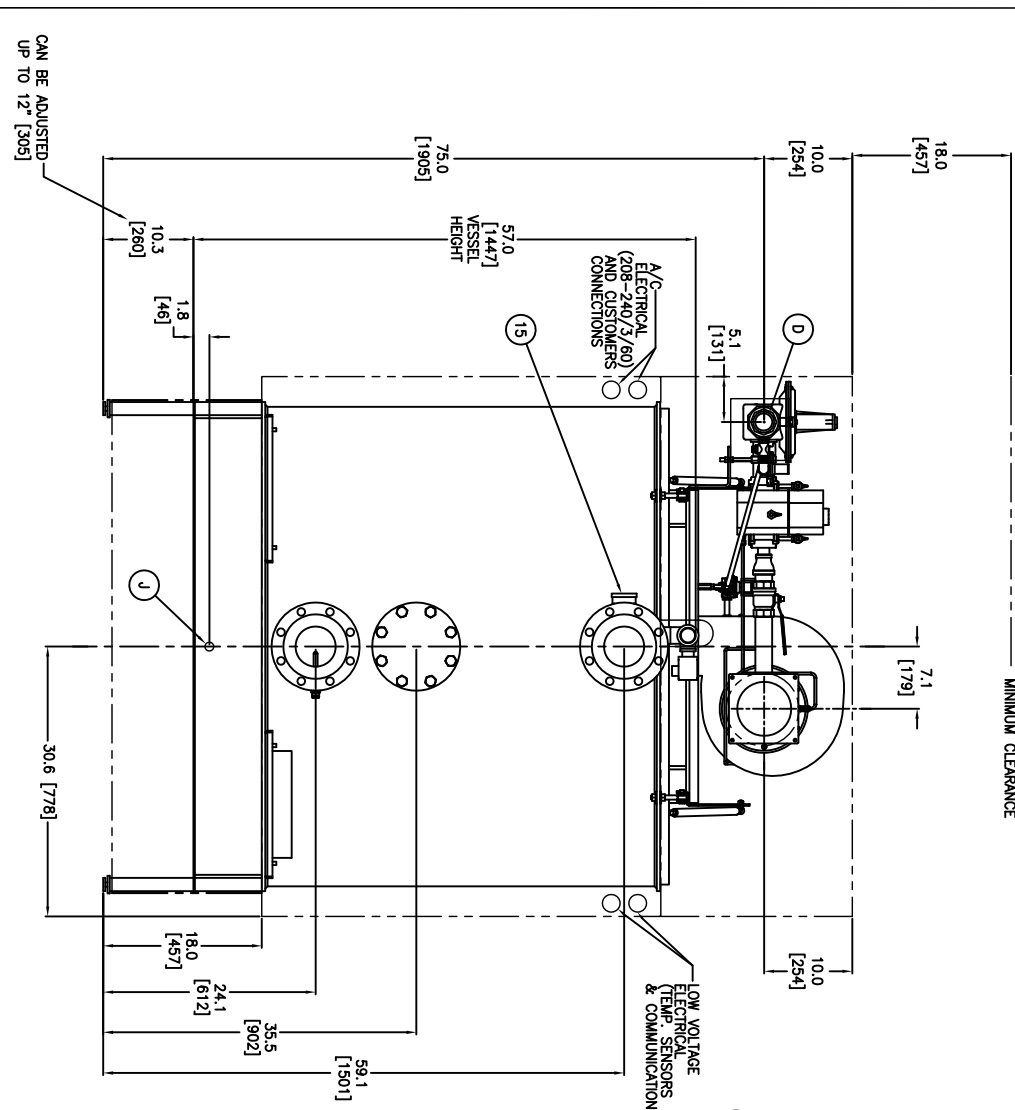
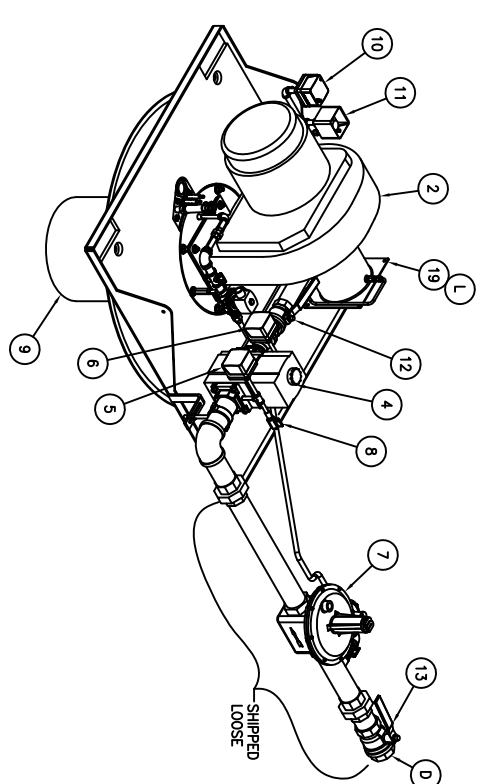
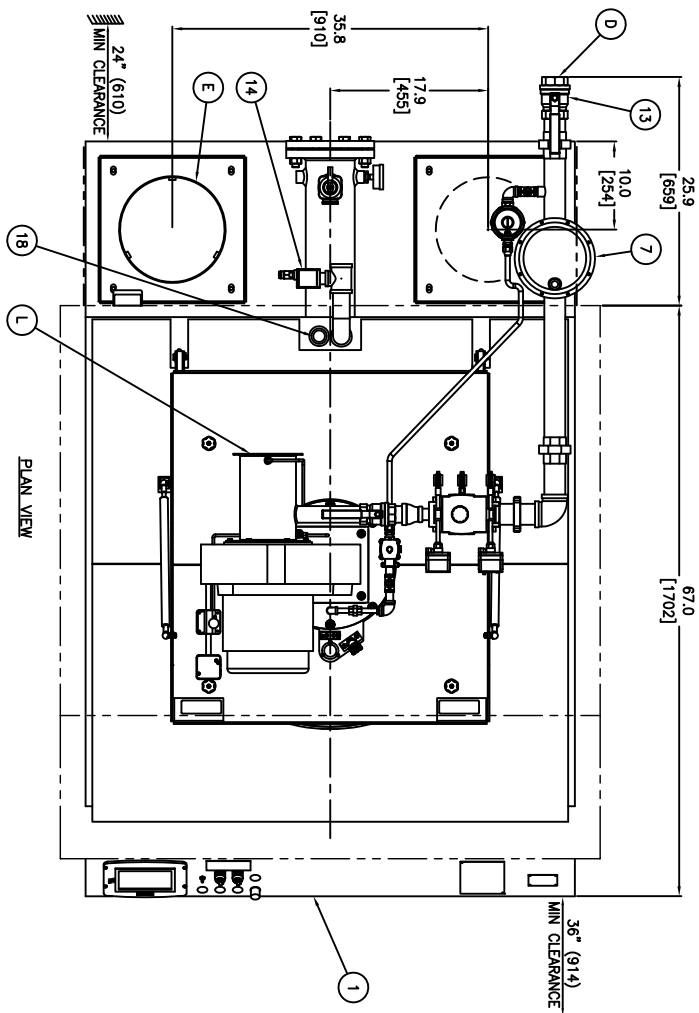


ITEM	MAJOR COMPONENTS
1	CONTROL PANEL WITH FALCON, 115/1/50-60
2	BLOWER MOTOR, PREMIX, 208-240/3/50-60
3	2" GAS TRAP PIPING
4	VALVE, GAS 120VAC 2" NPT.
5	LOW GAS PRESSURE SWITCH
6	HIGH GAS PRESSURE SWITCH
7	GAS PRESSURE REGULATOR, #210E, 2" NPT
8	LEAKAGE TEST COCK (3)
9	BURNER CAN UNIT
10	HIGH AIR PRESSURE SWITCH
11	COMBUSTION AIR PROWING SWITCH
12	1 1/2" BALL VALVE
13	2" BUTTERBALL VALVE
14	PROBE HOLDER
15	INDICATOR, TEMP./PRESSURE GAUGE
16	RELIEF VALVE, 3/4" NPT. INLET, (SET AT 125 PS) (SHIPPED LOOSE)
17	INLET TEMPERATURE WELL
18	OUTLET TEMPERATURE/HIGH LIMIT CONTROL SENSOR
19	COMBUSTION AIR-FUEL MIXING VENTURI

ITEM	CUSTOMER CONNECTIONS
A	5" 150# R.F.FLG. HIGH SUPPLY SIZE
B	5" 150# R.F.FLG. HIGH TEMP. RETURN SIZE
C	5" 150# R.F.FLG. LOW TEMP. RETURN SIZE
D	2" NPT. GAS SUPPLY LINE
E	12" DIA. STACK OUTLET (14" DIA. OPTIONAL)
F	1 1/2" NPT. VENT. SIZE
G	1" NPT. RELIEF VALVE OUTLET (125 PS)
H	1/2" NPT. (PLUGGED)
I	1 1/2" NPT. DRAIN (PLUGGED)
J	1" FPT. CONDENSATE DRAIN
K	3/4" NPT. (PLUGGED)
L	6" COB. AIR INLET (8" W/ DIRECT VENT KIT)
M	1-1/2" NPT (PLUGGED) FOR RELIEF VALVE KIT

BOILER DATA	
FUEL: NATURAL GAS	
INPUT: 3300 MBH	OUTPUT: 3036 MBH (92% EFF. NOMINAL)
MAX. OPERATING TEMPERATURE: 194°F (90°C)	
MINIMUM GAS PRESSURE REQUIRED: 6.8" W.C.	
MAXIMUM GAS PRESSURE ALLOWED: 5.0 PSIG	
INCOMING POWER: 208-240/3/50-60	
HAPS SETTING: 5.75 W.C.	
BOILER DRY WEIGHT: 4,835 LB. (2,193 KG)	
OPERATING WEIGHT: 6,570 LB. (2,980 KG)	
BOILER WATER VOLUME: NORMAL @ 209 GAL (791 LITERS)	

- NOTES:
1. BOILER IS DESIGNED AND CONSTRUCTED IN ACCORDANCE WITH THE ASME BOILER AND PRESSURE VESSEL CODE SECTION IV, WITH "1" STAMP FOR 125# MAMP.
 2. PACKAGED BOILER CERTIFIED FOR CULUS LABELED.
 3. ASME CSO-1 COMPLIANT.
 4. UNIT IS FACTORY FIRE TESTED.
 5. BURNER IS FULLY MODULATING, WITH 5:1 TURNDOWN.
 6. ALL NORMALLY UNUSED FITTINGS ARE CAPPED OR PLUGGED.
 7. BOILER LEGS ALLOW FOR ADJUSTMENT OF 2.5".
 8. DUE TO UPSPRING OF BURNER FOR SERVICE, DO NOT PIPE ACROSS TOP OF BOILER.
 9. BOILER TO BE FIELD PIPED WITH A 6" MINIMUM CONDENSATE DRAIN TRAP.
 10. PIPE AIR VENT TO EXPANSION TANK, AIR SEPARATOR OR USE AUTO AIR VENT.



REVISIONS

NO.	DESCRIPTION
1	CAN BE ADJUSTED UP TO 12" [305]

CAUTION

DIMENSIONS SHOWN ARE APPROXIMATE AND SHOULD NOT BE USED IN RESTRICTIVE LAYOUTS OR TO PREFABRICATE ASSEMBLIES UNLESS CLEAVER-BROOKS HAS BEEN CONSULTED. IT IS STRONGLY RECOMMENDED THAT THE CUSTOMER REQUEST AS-BUILT CERTIFIED DRAWINGS FOR THESE CASES.

WARNING:

Changes, modifications or repairs to this equipment are strictly prohibited. Changes to the design and construction of this equipment could result in damage to the equipment and/or serious personal injury.

DD3300CFC

SIZE: D

DIMENSION DIAGRAM

SHT 01 OF 01

CHECKED BY: JS

DRWG. NO.: DD3300CFC

00