

MAJOR COMPONENTS		
1	Control Panel	21 N/A
2	Entrance Panel	22 Handholes (6) 3.25" x 4.5"
3	Blower Motor - 7.5 HP	23 Front Sight Port
4	Air Compressor - 3 HP	24 Rear Sight Port
5	Combustion Safeguard Control - CB780E	25 Burner
6	Flame Scanner- Infrared	26 Alarm
7	Pressure Control - Operating Limit	27 Low Fire Hold Control
8	Pressure Control - High Limit (Manual Reset)	28 N/A
9	Pressure Control - Modulating	29 N/A
10	Main Low Water Column - Levelmaster II	30 Front Head Junction Box
11	Auxiliary Low Water Cutoff - Warrick 3C-2	31 Bottom Blowdown Piping
12	Steam Gauge	32 Surface Blowoff Piping
13	N/A	33 N/A
14	Stack Thermometer	34 N/A
15	Safety Valve (2) Set @ 150#	35 N/A
16	Gas Train	36 N/A
17	Fuel Oil Piping Terminal	37 N/A
18	Fuel Oil Pump Assembly	38 N/A
19	Manway 12" x 16"	39 N/A
20	N/A	40 N/A

SERVICE CONNECTIONS	
A	Electric - Main Power Supply- 460 / 3 / 60
B	N/A
C	Exhaust Vent Pipe - 16" OD
D	Vent Flange (See Detail)
E	Steam Outlet - 4" 300# R.F. Flange
F	N/A
G	N/A
H	Feedwater - (2) 1.5 NPT
I	Bottom Blowdown - (2) 1.5 NPT
J	Water Column Blowdown - 0.75 NPT
K	Gauge Glass Blowdown - 0.25 NPT
L	Surface Blowoff - 1.0 NPT (With Collector Pipe)
M	N/A
N	Main Gas - 1.5 NPT
O	Minimum Inlet Gas Pressure Required is 20" w.c. Maximum Inlet Gas Pressure Required: TBD Rating - 5,102 (cfh) MBtu
P	Oil Inlet - 0.75 NPT (75 PSI Required at Inlet) Rating - 36.4 gph
Q	Oil Outlet - 0.75 NPT
R	Chemical Feed - 1.0 NPT
S	Safety Valve - (2) Kunkle 6010FEE 1.0 x 1.25 FPT (Outlet)
T	N/A

Notes

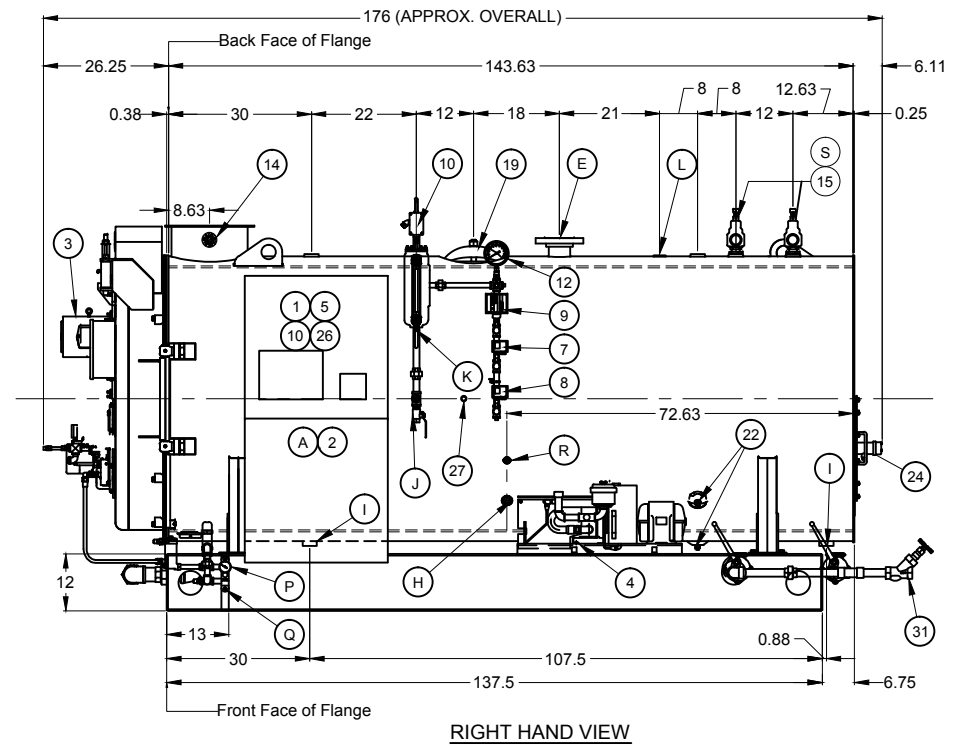
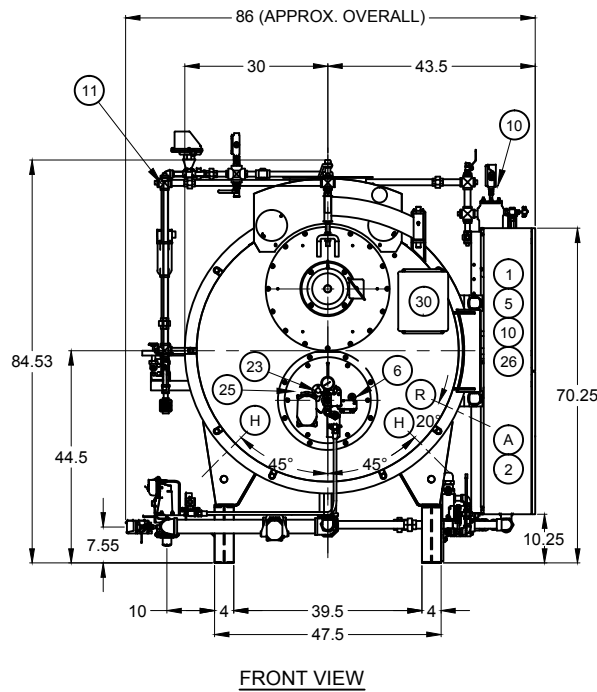
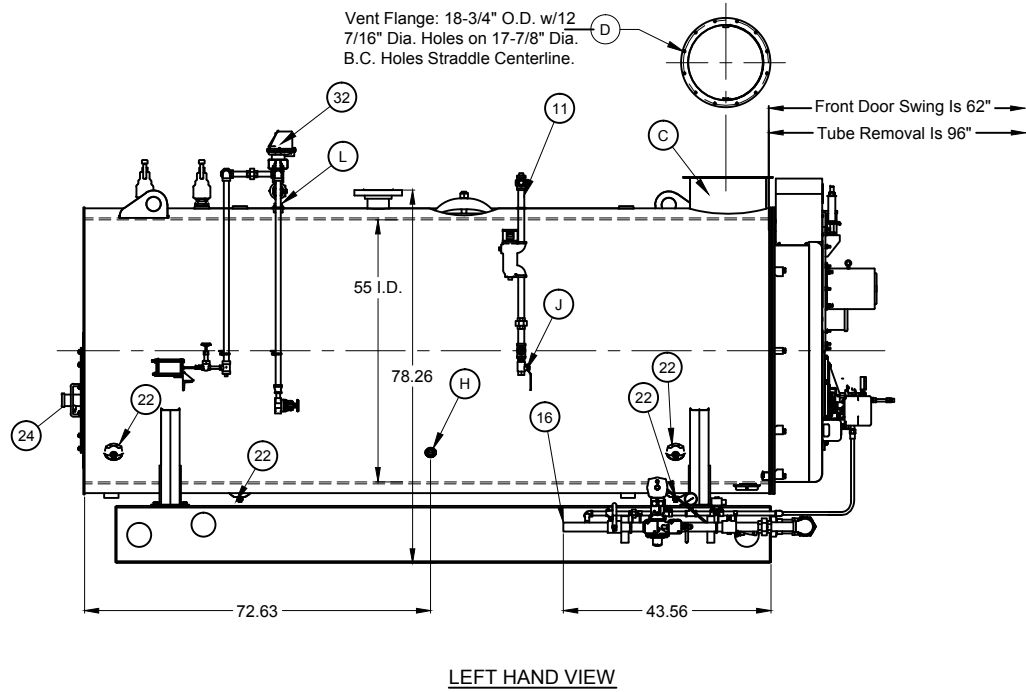
- * Boiler is Designed and Constructed in Accordance with the ASME Boiler and Pressure Vessel Code - Section 1 High Pressure Boiler
- * This Unit Complies with Insurance Underwriters Requirement for None Specified
- * The Boiler Package is painted with High Temperature Light Blue Enamel
- * The Burner Operation is Full Modulating
- * The Boiler Burner Package has a UL Label

This Boiler Is Provided with:

1. Control Circuit Transformer
2. Welded End Caps on Baseraills

BOILER SPECIFICATIONS	
Boiler Designation - CBEX ELITE 200 125	
Design Pressure - 150 ST	
Design Rating - 125 hp	
Emissions - 60 ppm	
Fuel(s) - No. 2 Oil & Natural Gas	
Steam Capacity - 4,313 # stm/hr @212 deg F	
Fireside Heating Surface - 452 Sq. Ft.	
Dry Weight - 11,180 LB	
Normal Water Weight - 6,890 LB	
Gallons (Operating) - 825	
Code Compliance - N/A	

THIS DRAWING IS PROPERTY OF CLEAVER-BROOKS DIVISION IT IS SUBJECT TO CHANGE WITHOUT NOTICE, AND IS NOT TO BE COPIED OR USED IN ANY WAY DETRIMENTAL TO THE COMPANY.



CAUTION

DIMENSIONS SHOWN ARE APPROXIMATE AND SHOULD NOT BE USED IN RESTRICTIVE LAYOUTS OR TO PREFABRICATE ASSEMBLIES UNLESS CLEAVER-BROOKS HAS BEEN CONSULTED. IT IS STRONGLY RECOMMENDED THAT THE CUSTOMER REQUEST AS-BUILT CERTIFIED DRAWINGS FOR THESE CASES.

WARNING

LIFTING LUGS PROVIDED ON THE VESSEL SHALL ONLY BE USED TO LIFT THE VESSEL WHEN IT IS DRY.

WARNING

CHANGES, MODIFICATIONS OR ALTERATIONS ARE STRICTLY PROHIBITED.

CHANGES TO THIS DRAWING AND SUBSEQUENT MODIFICATION OF EQUIPMENT COULD RESULT IN DAMAGE TO THE EQUIPMENT AND/OR SERIOUS PERSONAL INJURY.

PRELIMINARY

DIMENSIONAL DIAGRAM

SHT 01 OF 02

SCALE
N.T.S.
DATE
12/21/11

CleaverBrooks

MODEL	CBEX ELITE	FUEL	200	125	150ST	CAPACITY	N/A
SIZE	460	3	60	3	3	INSURANCE	100
PHASE							

DRWG. NO. CBEX ELITE 125 HP 150

REVISIONS

LU

D

C

B

A