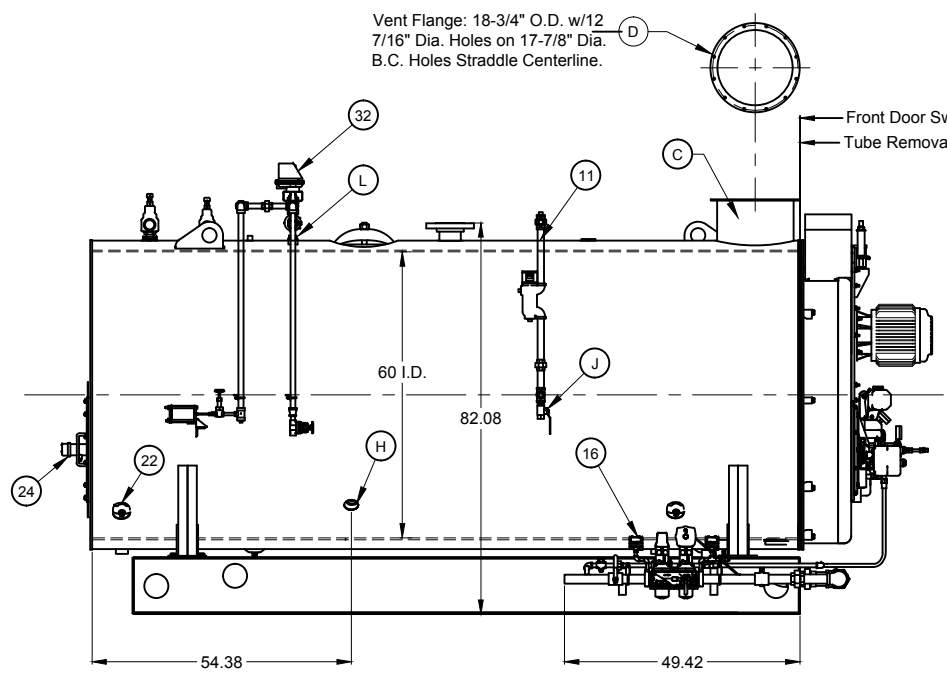
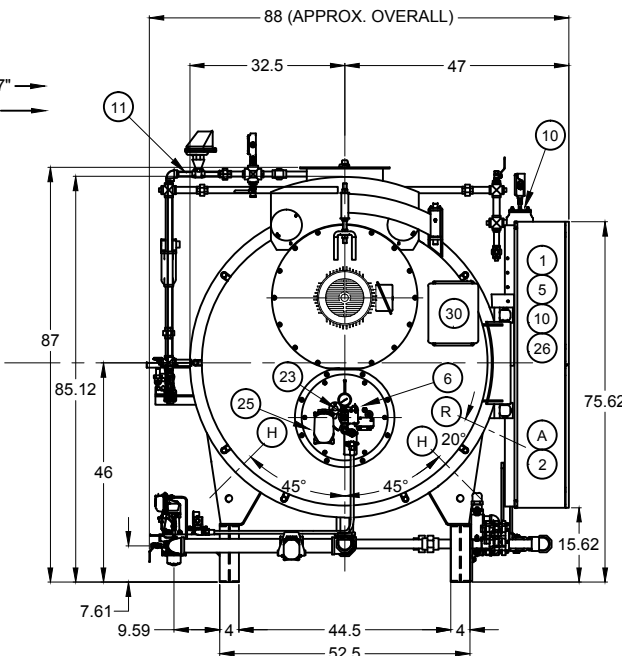


MAJOR COMPONENTS				SERVICE CONNECTIONS		NOTES
1	Control Panel	21	N/A	A	Electric - Main Power Supply - 460 / 3 / 60	* Boiler is Designed and Constructed in Accordance with the ASME Boiler and Pressure Vessel Code - Section 1 High Pressure Boiler * This Unit Complies with Insurance Underwriters Requirement for None Specified * The Boiler Package is painted with High Temperature Light Blue Enamel * The Burner Operation is Full Modulating * The Boiler Burner Package has a UL Label  This Boiler Is Provided with: 1. Control Circuit Transformer 2. Welded End Caps on Baseraills
2	Entrance Panel	22	Handholes (6) 3.25" x 4.5"	B	N/A	
3	Blower Motor - 7.5 HP	23	Front Sight Port	C	Exhaust Vent Pipe - 16" OD	
4	Air Compressor - 3 HP	24	Rear Sight Port	D	Vent Flange (See Detail)	
5	Combustion Safeguard Control - CB780E	25	Burner	E	Steam Outlet - 4" 300# R.F. Flange	
6	Flame Scanner- Infrared	26	Alarm	F	N/A	
7	Pressure Control - Operating Limit	27	Low Fire Hold Control	G	N/A	
8	Pressure Control - High Limit (Manual Reset)	28	N/A	H	Feedwater - (2) 1.5 NPT	
9	Pressure Control - Modulating	29	N/A	I	Bottom Blowdown - (2) 1.5 NPT	
10	Main Low Water Column - Levelmaster II	30	Front Head Junction Box	J	Water Column Blowdown - 0.75 NPT	
11	Auxiliary Low Water Cutoff - Warrick 3C-2	31	Bottom Blowdown Piping	K	Gauge Glass Blowdown - 0.25 NPT	
12	Steam Gauge	32	Surface Blowoff Piping	L	Surface Blowoff - 1.0 NPT (with Collector Pipe)	
13	N/A	33	N/A	M	N/A	
14	Stack Thermometer	34	N/A	N	Main Gas - 1.5 NPT	
15	Safety Valve (2) Set @ 150#	35	N/A	O	Minimum Inlet Gas Pressure Required is 27.5" w.c. Maximum Inlet Gas Pressure Required: TBD Rating - 6,123 (cfh) MBtu	
16	Gas Train	36	N/A	P	Oil Inlet - 0.75 NPT ( 75 PSI Required at Inlet) Rating - 43.7 gph	
17	Fuel Oil Piping Terminal	37	N/A	Q	Oil Outlet - 0.75 NPT	
18	Fuel Oil Pump Assembly	38	N/A	R	Chemical Feed - 1.0 NPT	
19	Manway 12" x 16"	39	N/A	S	Safety Valve - (1) Kunkle 6010FEE 1.0 x 1.25 FPT (Outlet)	
20	N/A	40	N/A	T	Safety Valve - (1) Kunkle 6010GFE 1.25 x 1.5 FPT (Outlet)	

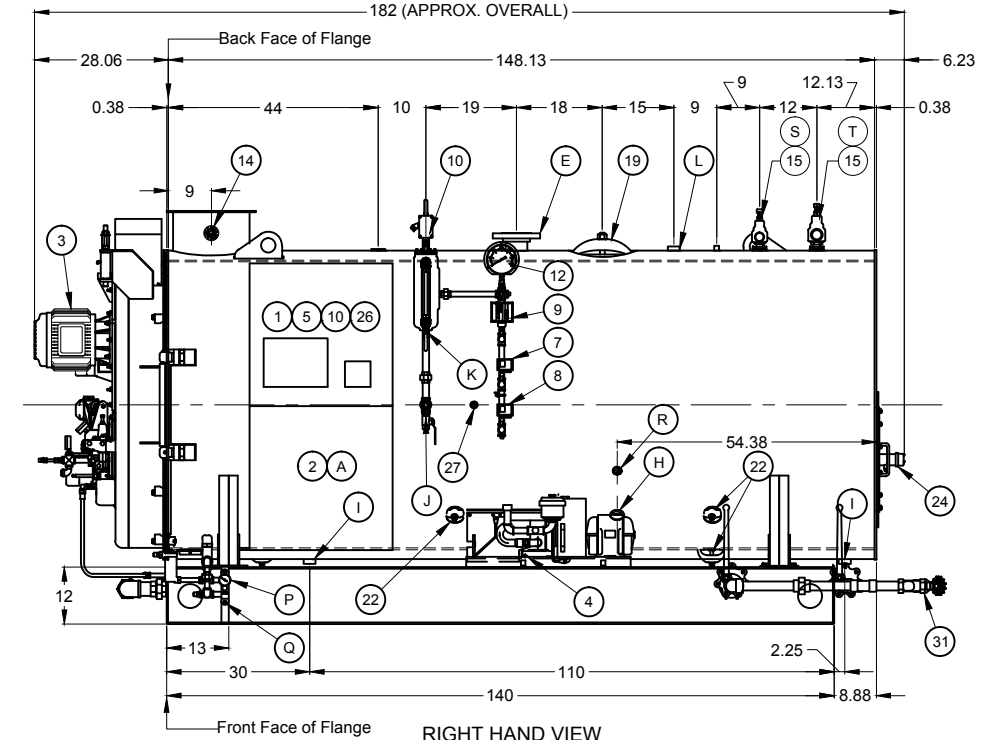
BOILER SPECIFICATIONS	
Boiler Designation	- CBEX 200 150
Design Pressure	- 150 ST
Design Rating	- 150 hp
Emissions	- 60 ppm
Fuel(s)	- No. 2 Oil and Natural Gas
Steam Capacity	- 5,175 # stm/hr @212 deg F
Fireside Heating Surface	- 526 Sq. Ft.
Dry Weight	- 12,520 LB
Normal Water Weight	- 8,010 LB
Gallons (Operating)	- 959
Code Compliance	- N/A



LEFT HAND VIEW



FRONT VIEW



RIGHT HAND VIEW

THIS DRAWING IS PROPERTY OF CLEAVER-BROOKS DIVISION IT IS SUBJECT TO CHANGE WITHOUT NOTICE, AND IS NOT TO BE COPIED OR USED IN ANY WAY DETRIMENTAL TO THE COMPANY.

REVISIONS	<b>CAUTION</b>	<b>WARNING</b>	<b>WARNING</b>	PRELIMINARY DIMENSIONAL DIAGRAM SHT 01 OF 02	SCALE N.T.S. DATE 12/21/11 DRAWN H L J CHECKED BY M S T	<b>CleaverBrooks</b> CBEX ELITE 200 150 150ST MODEL FUEL SIZE PRESSURE CAPACITY 460 3 60 3 N/A VOLTS PHASE HERTZ WISE INSURANCE DRWG. NO. CBEX ELITE 150 HP 150 00	
	DIMENSIONS SHOWN ARE APPROXIMATE AND SHOULD NOT BE USED IN RESTRICTIVE LAYOUTS OR TO PREFABRICATE ASSEMBLIES UNLESS CLEAVER-BROOKS HAS BEEN CONSULTED. IT IS STRONGLY RECOMMENDED THAT THE CUSTOMER REQUEST AS-BUILT CERTIFIED DRAWINGS FOR THESE CASES.	LIFTING LUGS PROVIDED ON THE VESSEL SHALL ONLY BE USED TO LIFT THE VESSEL WHEN IT IS DRY.	CHANGES, MODIFICATIONS OR ALTERATIONS ARE STRICTLY PROHIBITED.				CHANGES TO THIS DRAWING AND SUBSEQUENT MODIFICATION OF EQUIPMENT COULD RESULT IN DAMAGE TO THE EQUIPMENT AND/OR SERIOUS PERSONAL INJURY.