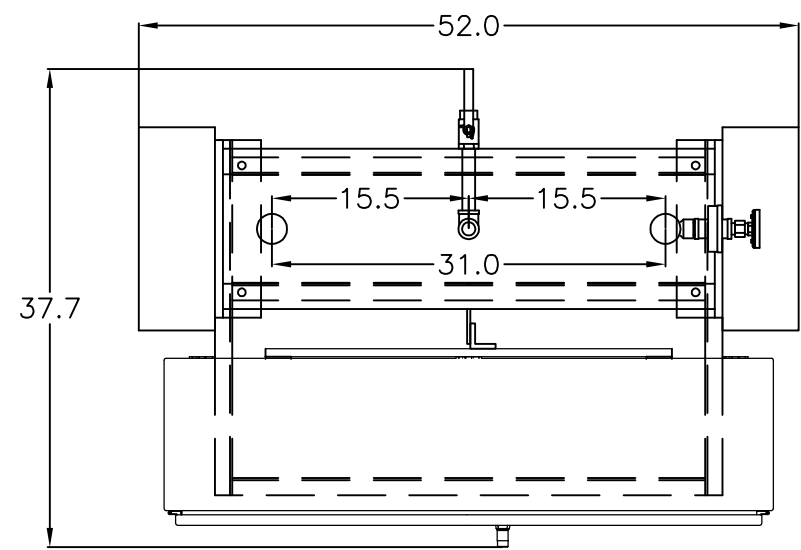
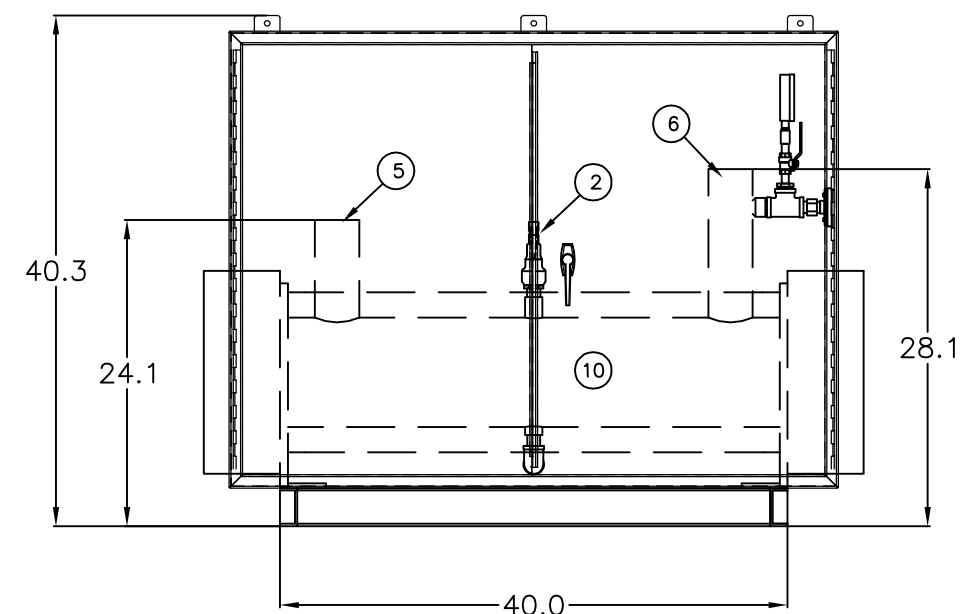
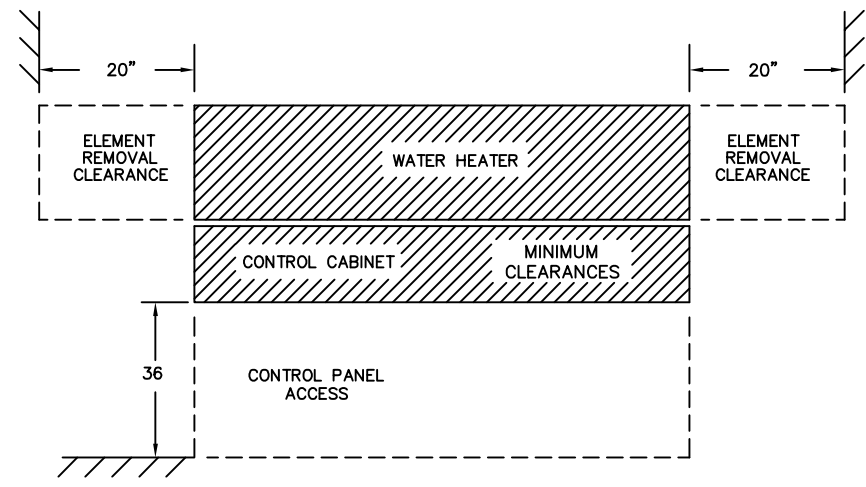


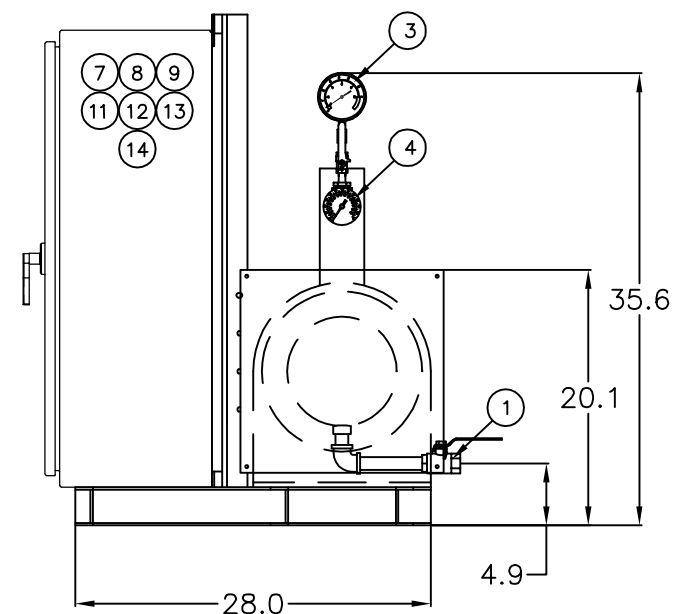
THIS DRAWING IS PROPERTY OF CLEAVER-BROOKS, INC. IT IS SUBJECT TO CHANGE WITHOUT NOTICE, AND IS NOT TO BE COPIED OR USED IN ANY WAY DETRIMENTAL TO THE COMPANY. SUGGESTIONS AND INFORMATION CONTAINED ON THIS DRAWING ARE NOT INTENDED TO SUPPLANT LOCAL CODES.



TOP VIEW



FRONT VIEW



SIDE VIEW

ITEM	DESCRIPTION/MATERIAL
1	DRAIN VALVE, BALL, 3/4" NPT
2	SAFETY RELIEF VALVE SET @ 160PSI (SHIPPED LOOSE)
3	PRESSURE GAUGE
4	THERMOMETER
5	WATER INLET - 3" NPT
6	WATER OUTLET - 3" NPT
7	POWER SWITCH
8	PILOT LIGHT, WHITE (CONTROL POWER "ON")
9	PILOT LIGHT, RED (COMMON ALARM)
10	LOW WATER CUTOFF, WARRICK PROBE
11	WATER FLOW SWITCH (SHIPPED LOOSE)
12	STEP LIGHTS, AMBER
13	MANUAL RESET HIGH TEMPERATURE CUTOFF
14	AUXILIARY AUTO HIGH TEMPERATURE CUTOFF

GENERAL NOTES

1) Heater to be constructed per ASME Boiler and Pressure Vessel Code, Section IV, "H" stamped and National Board registered.

2) Heater to comply with NEC and cULus requirements.

3) Heater to be wrapped with 4" fiberglass insulation.

CAUTION

DIMENSIONS SHOWN ARE APPROXIMATE AND SHOULD NOT BE USED IN RESTRICTIVE LAYOUTS OR TO PREFABRICATE ASSEMBLIES UNLESS CLEAVER-BROOKS HAS BEEN CONSULTED. IT IS STRONGLY RECOMMENDED THAT THE CUSTOMER REQUEST AS-BUILT CERTIFIED DRAWINGS FOR THESE CASES.

BOILER MAY BE SHOWN WITH OPTIONAL EQUIPMENT IN LUEI OF STANDARD COMPONENTS.

SPECIFICATIONS	
PRESSURE: DESIGN	160
MAX OPER	250 F
KW	105 AT 208 / 3 / 60
ELEMENTS	21 AT 5 KW 75 WSI INCOLOY
RELIEF VALVE SET PRESSURE	160 PSI

SAMPLE

DIMENSIONAL DRAWING

SHT 01 OF 01

SCALE	N.T.S.
DATE	12/14/09
DRAWN	
SIZE	



IWH TYPE	812 SIZE	105 KW	160HW PRESSURE	GALLONS
208 VOLTS	3 PHASE	60 HERTZ	3 WIRE	NO INSURANCE

DRWG. NO. **SAMPLE** 00

REVISIONS

D
C
B
A