

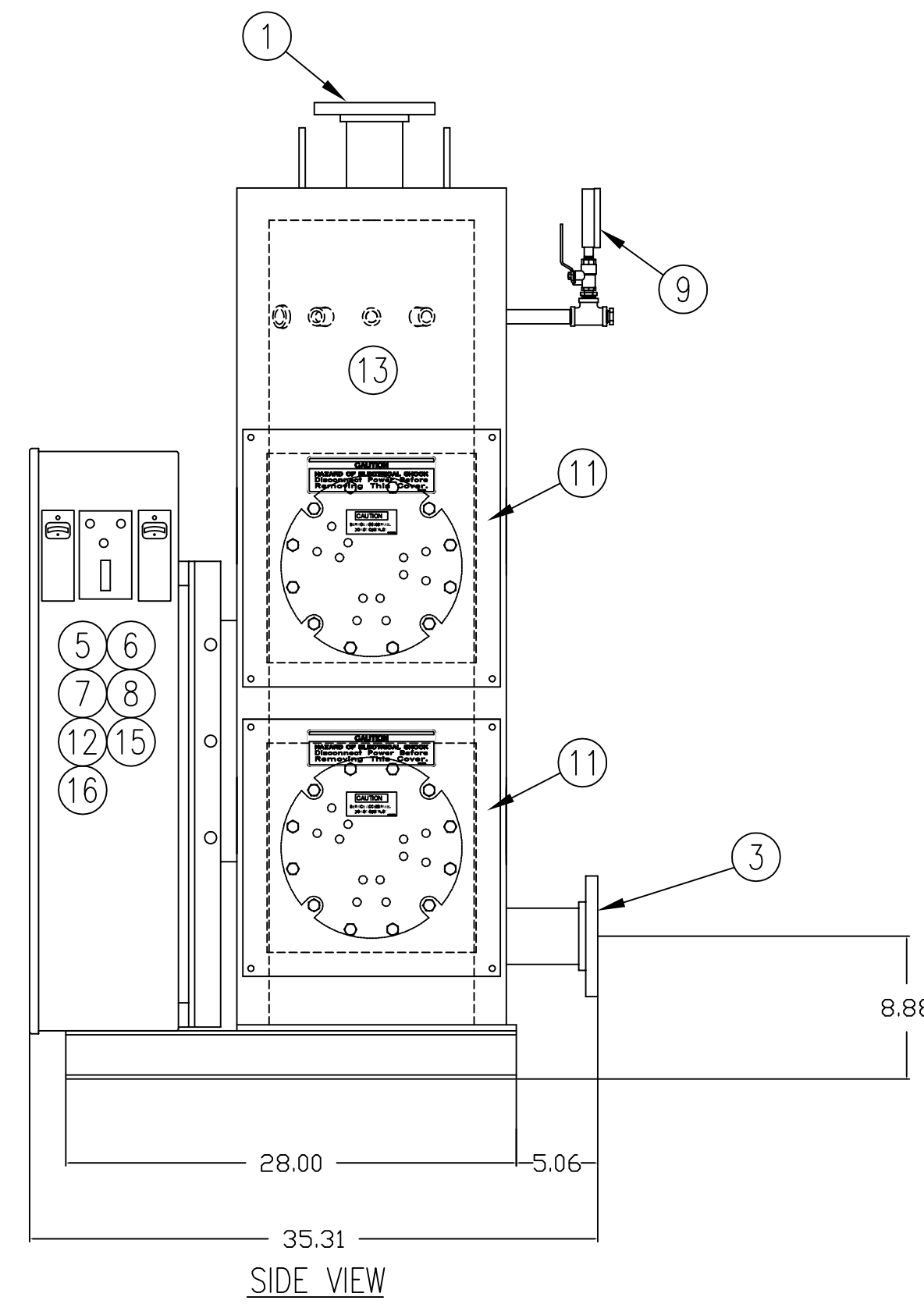
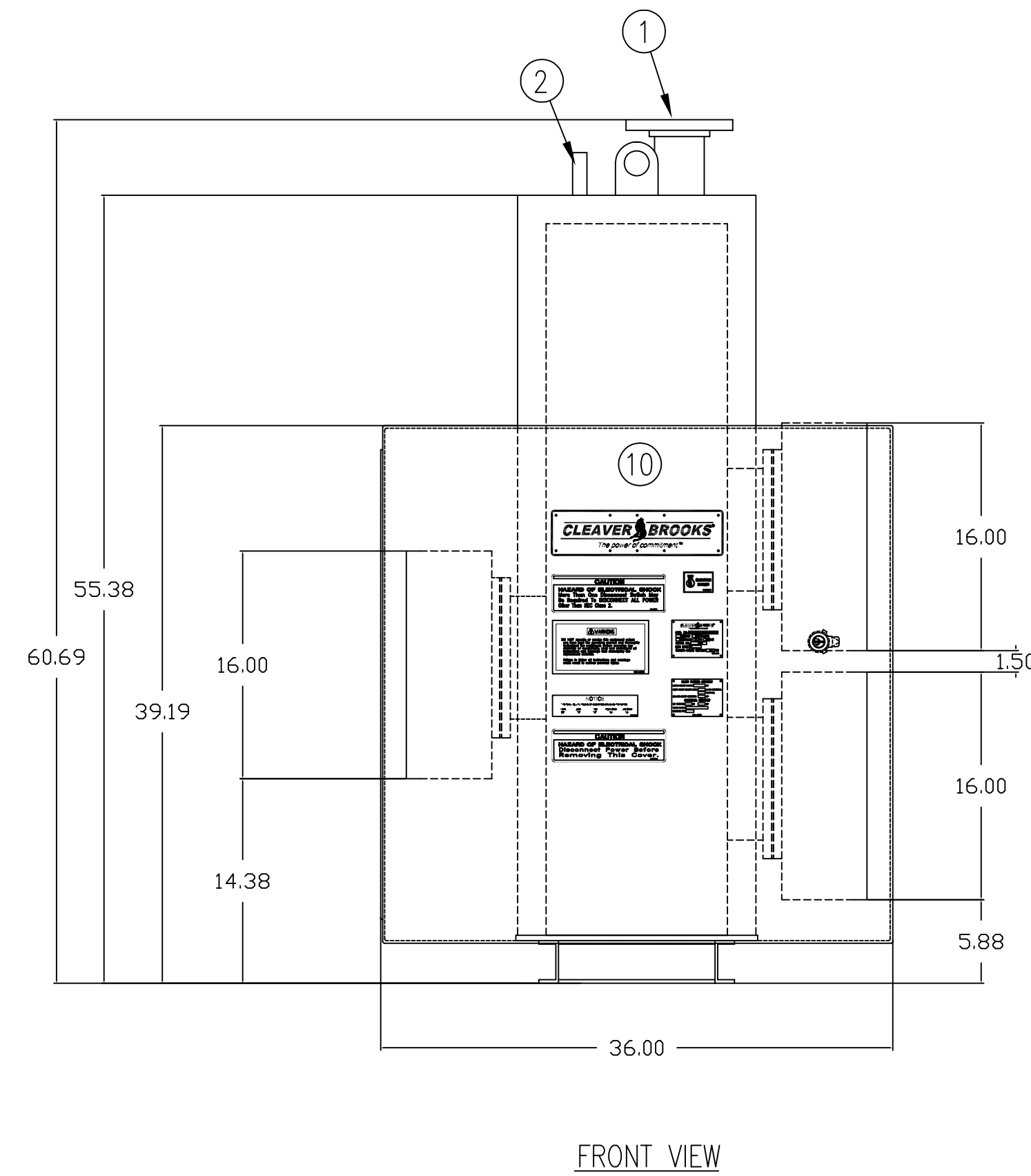
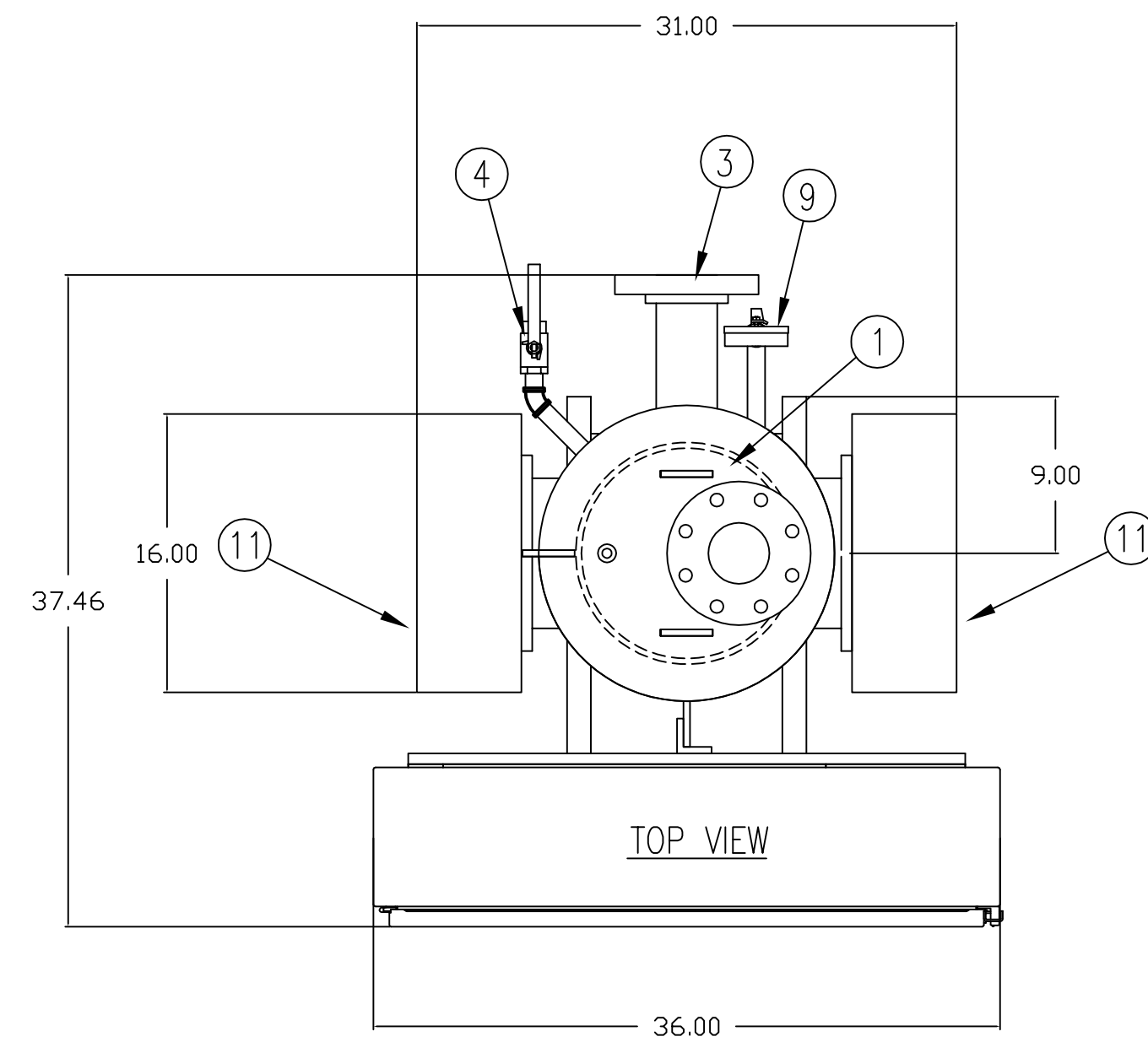
THIS DRAWING IS PROPERTY OF CLEAVER-BROOKS, INC. IT IS SUBJECT TO CHANGE WITHOUT NOTICE, AND IS NOT TO BE COPIED OR USED IN ANY WAY DETRIMENTAL TO THE COMPANY. SUGGESTIONS AND INFORMATION CONTAINED ON THIS DRAWING ARE NOT INTENDED TO SUPPLANT LOCAL CODES.

4

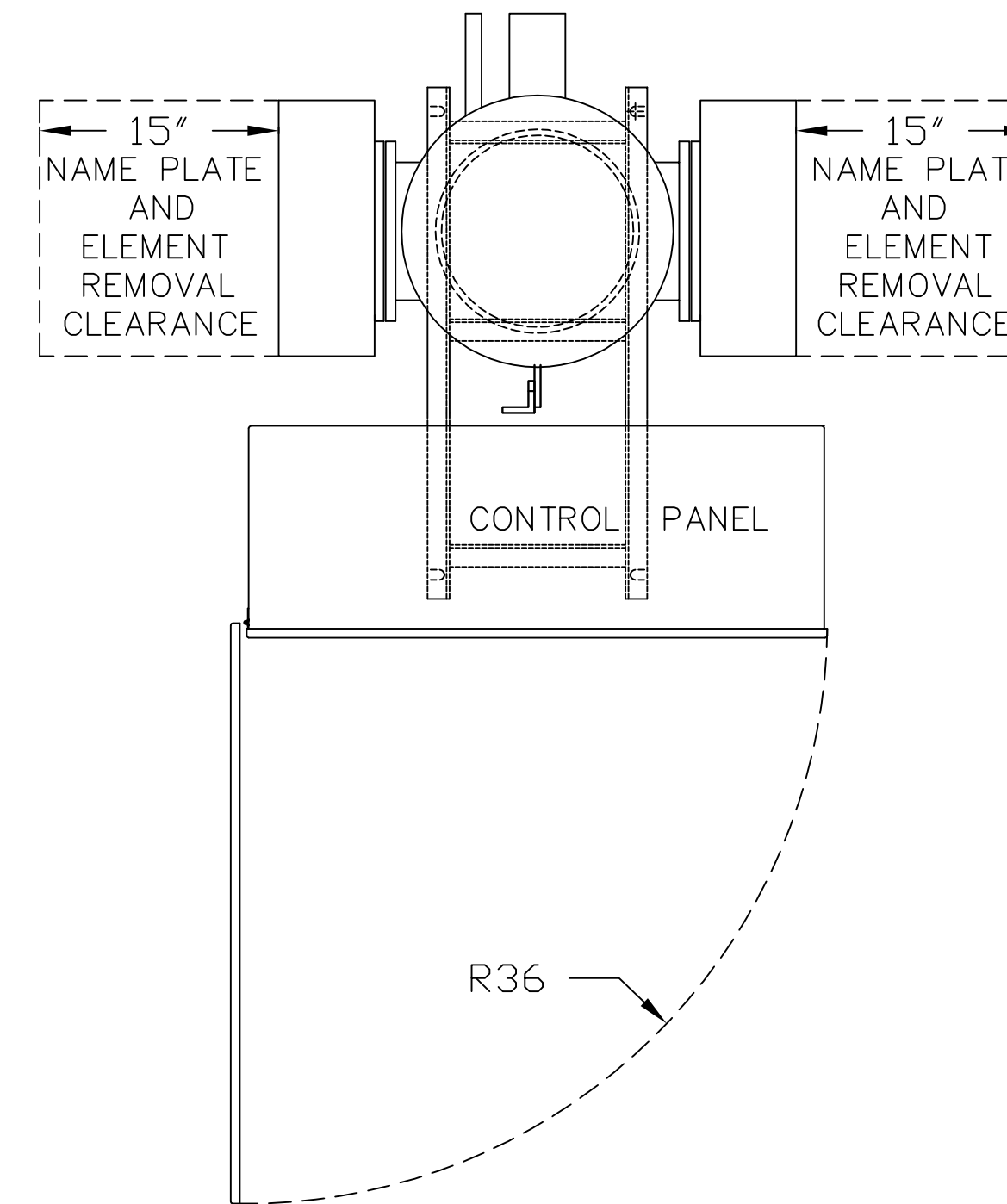
3

2

1



MINIMUM RECOMMENDED CLEARANCES



FOR ELEMENT REMOVAL AND DOOR SWING

ITEM	DESCRIPTION/MATERIAL
1	OUTLET - 3.0 150 LB FLG
2	SAFETY VALVE - (1) @ 160 PSI
3	RETURN/FEEDWATER - 3.0 150 LB FLG
4	BLOWDOWN/DRAIN VALVE - 0.75 NPS
5	TEMPERATURE CONTROLLER - HIGH LIMIT
6	TEMPERATURE CONTROLLER - OPERATING LIMIT
7	TEMPERATURE CONTROLLER - MODULATING LIMIT
8	EXCESS WATER TEMPERATURE LIGHT
9	PRESSURE GAUGE
10	ELECTRICAL PANEL ENTRANCE/DOOR
11	ELEMENT ACCESS PANEL
12	POWER SWITCH WITH PILOT LIGHT(S)
13	LOW WATER CUTOFF - WARRICK PROBE
14	N/A
15	DIGITAL TEMPERATURE READOUT
16	STEP LIGHTS (1 STEP @ 15 KW)(4 STEPS @ 30 KW)

NOTES:

- 1) Boiler to be constructed per ASME Boiler and Pressure Vessel Code, Section IV, "H" stamped and National Board registered.
- 2) Boiler to comply with NEC and cULus requirements.
- 3a) Vessel is to be wrapped with 2" insulation
- c) Jacket enclosure is to be lined with one layer of insulation.
- 4) Boiler meets CSD-1 requirements

CAUTION
 DIMENSIONS SHOWN ARE APPROXIMATE AND SHOULD NOT BE USED IN RESTRICTIVE LAYOUTS OR TO PREFABRICATE ASSEMBLIES UNLESS CLEAVER-BROOKS HAS BEEN CONSULTED. IT IS STRONGLY RECOMMENDED THAT THE CUSTOMER REQUEST AS-BUILT CERTIFIED DRAWINGS FOR THESE CASES.
 BOILER MAY BE SHOWN WITH OPTIONAL EQUIPMENT IN LUEI OF STANDARD COMPONENTS.

ELECTRICAL SPECIFICATIONS

PRESSURE: DESIGN 160HW
 KW 135 AT 380 / 3 / 60
27 ELEMENTS AT 5 KW 75 WSI INCOLOY
 RELIEF VALVE SET PRESSURE 160 PSI

SAMPLE

DIMENSIONAL DRAWING

SHT 01 OF 01

SCALE
 N.T.S.
 DATE
 6/16/10
 DRAWN
 SIZE



WB TYPE	SIZE	KW	PRESSURE	GALLONS
380 VOLTS	3 PHASE	60 HERTZ	160HW	NO INSURANCE

DRWG. NO. **SAMPLE** **00**

REVISIONS

D
C
B
A