

THIS DRAWING IS PROPERTY OF CLEAVER-BROOKS, INC. IT IS SUBJECT TO CHANGE WITHOUT NOTICE, AND IS NOT TO BE COPIED OR USED IN ANY WAY DETRIMENTAL TO THE COMPANY. SUGGESTIONS AND INFORMATION CONTAINED ON THIS DRAWING ARE NOT INTENDED TO SUPPLANT LOCAL CODES.

ITEM	DESCRIPTION/MATERIAL
1	DRAIN VALVE - 1.25 NPS (1)
2	WATER INLET / RETURN - 4.0" 150# FF FLG
3	PRESSURE GAUGE
4	RELIEF VALVE - SET AT 40#
5	WATER OUTLET - 4.0" 150# FF FLG
6	LOW WATER CUTOFF - PROBE TYPE
7	CONTROL PANEL ENTRANCE
8	PILOT/POWER SWITCH
9	ELEMENT ACCESS PANEL
10	WATER FLOW SWITCH (SHIPPED LOOSE)
11	ALARM
12	OUTDOOR RESET CONTROL
13	BOILER 8 STEPS WITH LIGHTS
14	TEMPERATURE CONTROL-MODULATING
15	TEMPERATURE CONTROL - OPERATING LIMIT
16	TEMPERATURE CONTROL - HIGH LIMIT
17	DIGITAL TEMPERATURE READOUT
18	DIGITAL METER

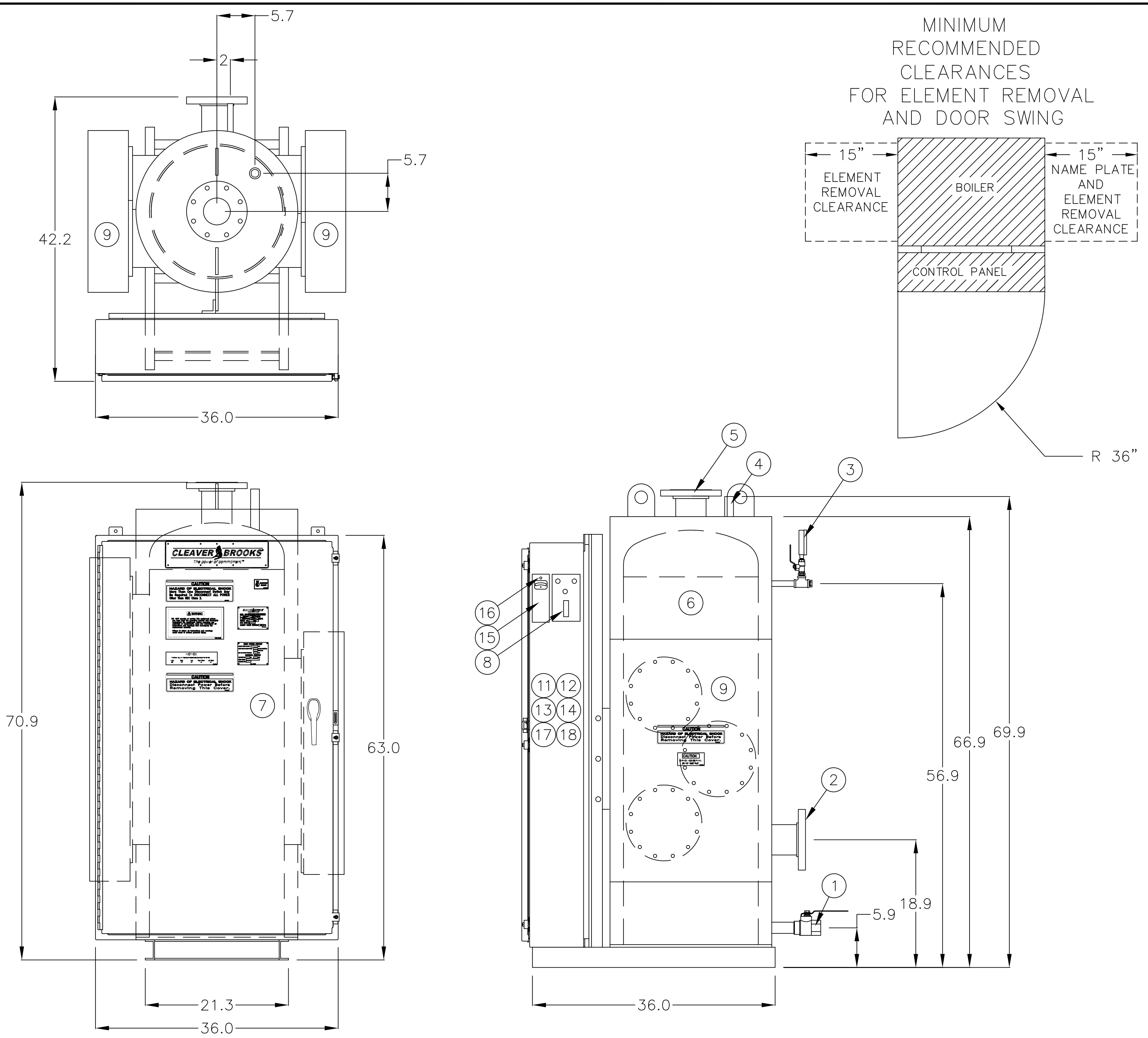
NOTES:

- 1) Boiler to be constructed per ASME Boiler and Pressure Vessel Code, Section IV, "H" stamped and National Board registered.
- 2) Boiler to comply with NEC, CSD-1 and UL requirements
- 3) (a) Vessel is to be wrapped with 2" insulation
 (b) One layer of standard 2" insulation is to be on control panel back plate and rear wall of the boiler casing

CAUTION

DIMENSIONS SHOWN ARE APPROXIMATE AND SHOULD NOT BE USED IN RESTRICTIVE LAYOUTS OR TO PREFABRICATE ASSEMBLIES UNLESS CLEAVER-BROOKS HAS BEEN CONSULTED. IT IS STRONGLY RECOMMENDED THAT THE CUSTOMER REQUEST AS-BUILT CERTIFIED DRAWINGS FOR THESE CASES.

BOILER MAY BE SHOWN WITH OPTIONAL EQUIPMENT IN LUEI OF STANDARD COMPONENTS.



REVISIONS	SPECIFICATIONS
	PRESSURE: DESIGN 160 PSI KW 504 AT 480 / 3 / 60 84 ELEMENTS AT 6 KW 75 WSI INCOLOY RELIEF VALVE SET PRESSURE 40 PSI

SAMPLE	DIMENSIONAL DRAWING
	SHT 01 OF 01

SCALE		 The power of commitment.™				
N.T.S.		WB	202	504	160HW	
DATE		TYPE	SIZE	KW	PRESSURE	GALLONS
9/29/09		480	3	60	3	NO
DRAWN		VOLTS	PHASE	HERTZ	WIRE	INSURANCE
SIZE						
DRWG. NO.		SAMPLE				00