

THIS DRAWING IS PROPERTY OF CLEAVER-BROOKS, INC. IT IS SUBJECT TO CHANGE WITHOUT NOTICE, AND IS NOT TO BE COPIED OR USED IN ANY WAY DETRIMENTAL TO THE COMPANY. SUGGESTIONS AND INFORMATION CONTAINED ON THIS DRAWING ARE NOT INTENDED TO SUPPLANT LOCAL CODES.

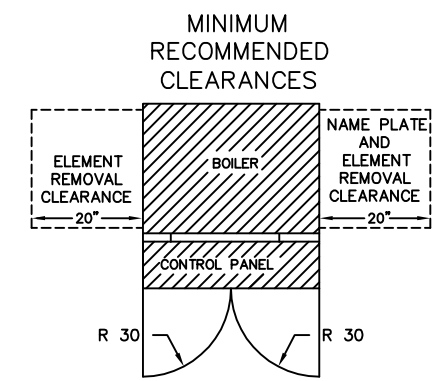
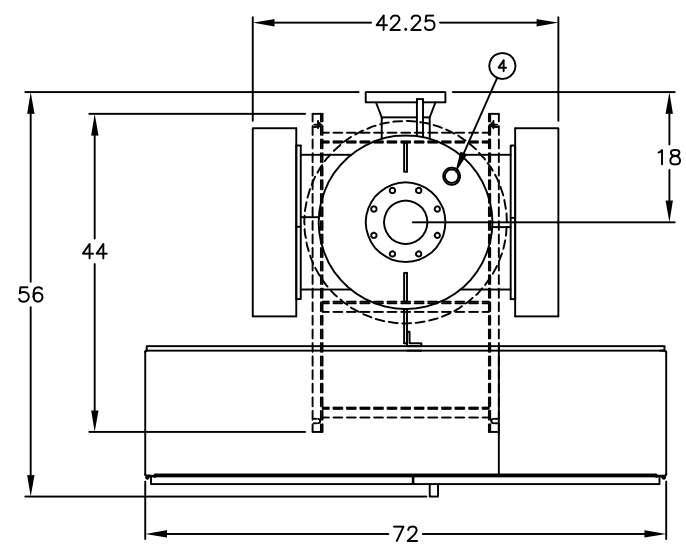
4

3

2

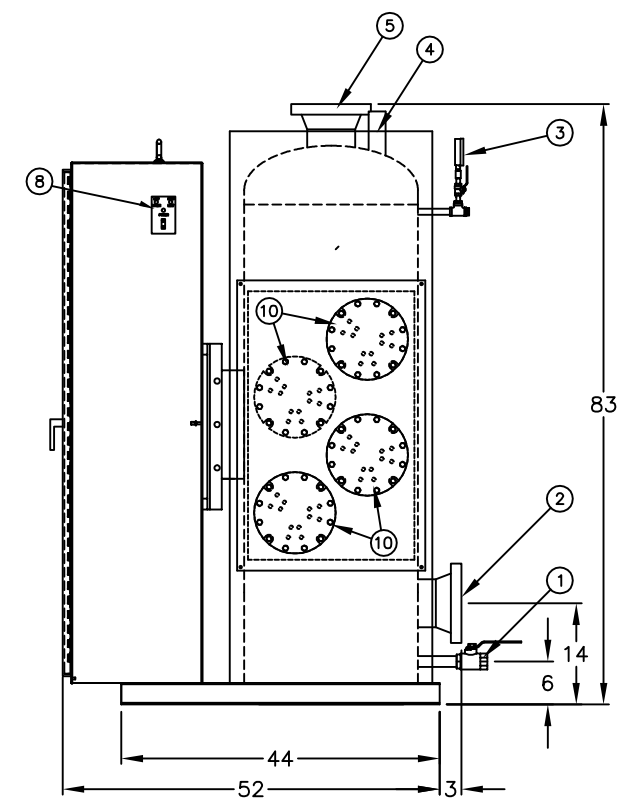
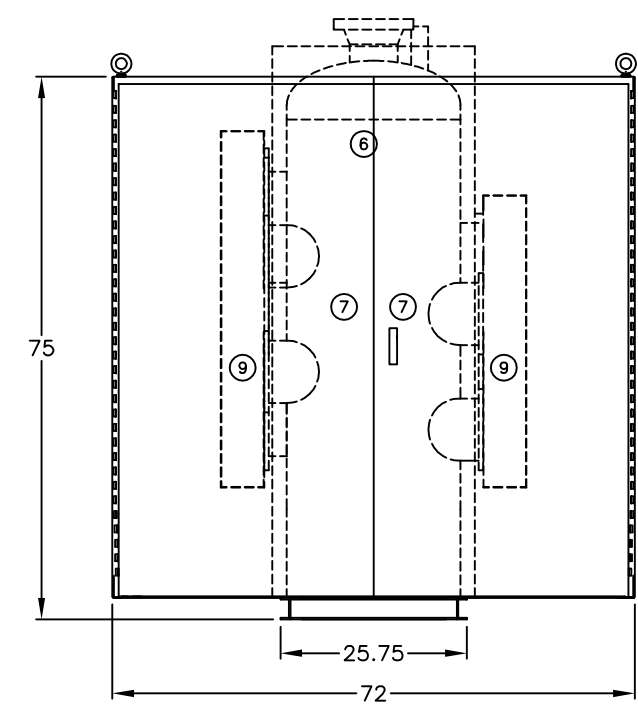
1

ITEM	DESCRIPTION/MATERIAL
1	DRAIN VALVE – 1.5 NPS (1)
2	WATER RETURN – 6.0" 150# FF FLG
3	PRESSURE GAUGE
4	RELIEF VALVE – ( 1 ) SET AT 160
5	WATER SUPPLY – 6.0" 150# FF FLG
6	LOW WATER CUTOFF
7	CONTROL PANEL ENTRANCE
8	PILOT/POWER SWITCH
9	ELEMENT ACCESS PANEL
10	ELEMENTS
11	N/A



NOTES:

- 1) Boiler to be constructed per ASME Boiler and Pressure Vessel Code, Section IV, "H" stamped and National Board registered.
- 2) Boiler to comply with NEC, CSD-1
- 3) Vessel is to be wrapped with one layer of standard 2" fiberglass insulation.



**CAUTION**

DIMENSIONS SHOWN ARE APPROXIMATE AND SHOULD NOT BE USED IN RESTRICTIVE LAYOUTS OR TO PREFABRICATE ASSEMBLIES UNLESS CLEAVER-BROOKS HAS BEEN CONSULTED. IT IS STRONGLY RECOMMENDED THAT THE CUSTOMER REQUEST AS-BUILT CERTIFIED DRAWINGS FOR THESE CASES.

BOILER MAY BE SHOWN WITH OPTIONAL EQUIPMENT IN LUEI OF STANDARD COMPONENTS.

REVISIONS	<b>SPECIFICATIONS</b>
	PRESSURE: DESIGN <u>160</u> MAX OPER <u>160</u> F° KW <u>1020</u> AT <u>600</u> / <u>3</u> / <u>60</u> <u>102</u> ELEMENTS AT <u>10</u> KW <u>75</u> WSI INCOLOY RELIEF VALVE SET PRESSURE <u>160</u> PSI

SAMPLE	DIMENSIONAL DRAWING
	SHT 01 OF 01

SCALE	<b>CLEAVER BROOKS</b> <i>The power of commitment.™</i>				
N.T.S.	WB	243	1020	160HW	GALLONS
DATE	TYPE	SIZE	KW	PRESSURE	INSURANCE
8/18/10	600	3	60	3	N/A
DRAWN	VOLTS	PHASE	HERTZ	WIRE	
SIZE					
	DRWG. NO.	SAMPLE			01

D  
C  
B  
A