

ProFire XLLG Series Product Information
Vertical Configuration
Combination Gas / #2 Oil
37.8 - 63.0 MMBtu



The XL series combination gas/oil burner is a forced draft packaged burner system. A backward curved impeller provides combustion air for various furnace pressures or high altitude applications. The rear-access cover is hinged for convenient inspection or service of the firing head components. XL series combination gas/oil burners change from one fuel to the other by manually retracting the oil gun, and with the simple flip of a switch. No burner modifications or readjustments are required when changing from one fuel to the other. Compressor modules and main gas train components are shipped loose. CSD-1, GAP, FM, NFPA-85 and other regulatory agency control options are available.



STANDARD EQUIPMENT

- 120/1/60 Control Circuit
- Panel Signal Lights: Power On, Main Fuel, Ignition, and Flame Failure
- Burner Mouted Junction Box w/Remote Panel
- Combustion Air Proving Switch
- Air Dampers w/Silencer
- Burner Mounting Flange
- Gas-Electric Ignition
- Hinged Rear Access Cover
- Fuel Changeover Switch

SERIES FEATURES

S = STANDARD
 O = OPTIONAL
 N/A = NOT AVAILABLE

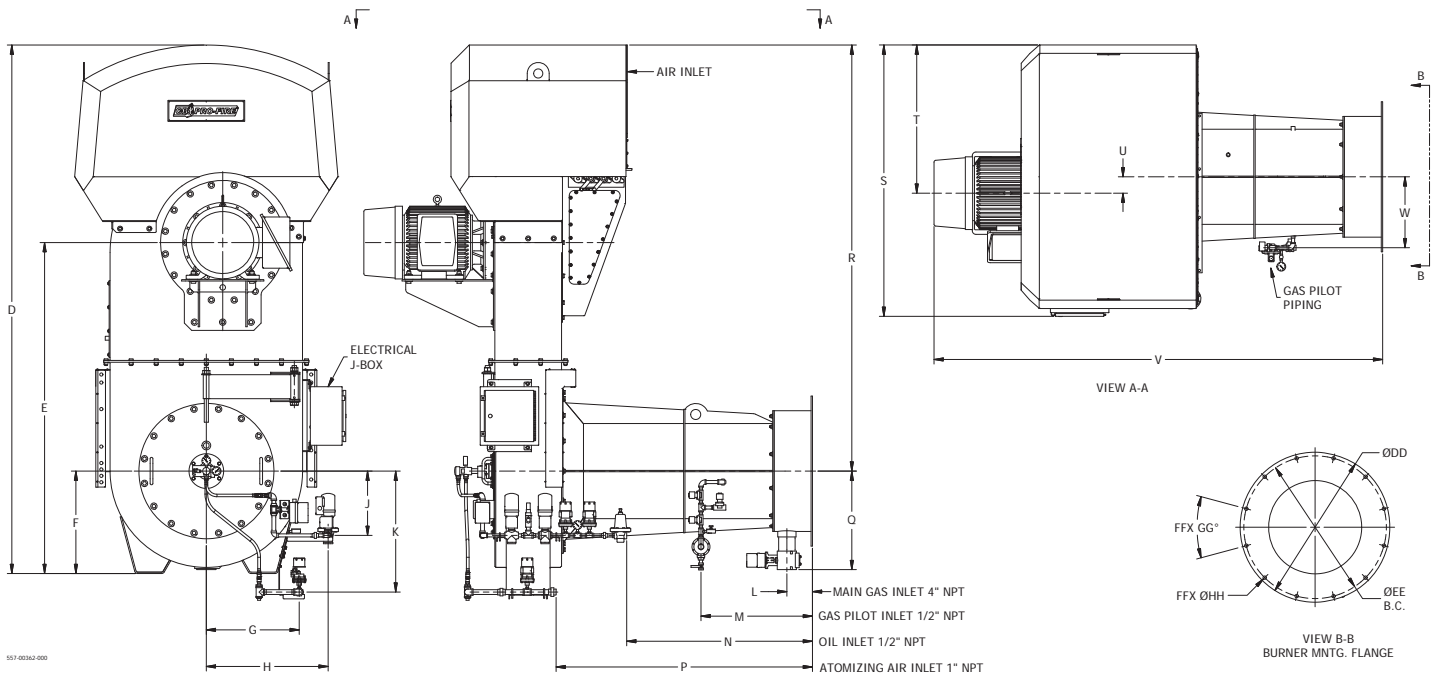
	XLLG-378	XLLG-462	XLLG-546	
	XLLG-420	XLLG-504	XLLG-588	XLLG-630
Flame Safeguard with UV Scanner (IR Scanner Available)	S	S	S	S
3600 RPM Combustion Fan	S	S	S	S
Full Modulation Firing	S	S	S	S
Parallel Positioning System	S	S	S	S
Dry Oven	O	O	O	O
O ₂ Trim	O	O	O	O
Variable Frequency Drive (VFD)	O	O	O	O
High & Low Gas Pressure Switches	S	S	S	S
Normally Open (N.O.) Vent Valve	S	S	S	S
Main Gas Regulator & (2) Gas Shutoff Cocks	S	S	S	S
Gas Flow Control Valves Mounted on Burner Piping	S	S	S	S
2-Way Motorized Oil Valve w/ Proof of Closure (POC)	S	S	S	S
Burner Mounted Oil Flow Control Valve	S	S	S	S
Separately Mounted Air Compressor Module	S	S	S	S
3-Way Regulating Valve w/Relief Valve Upstream of Burner Oil Piping	S	S	S	S
High & Low Oil Pressure Switch	S	S	S	S
Atomizing Air Proving Switch & Fuel Oil Strainer (Shipped Loose)	S	S	S	S

SPECIFICATIONS & DIMENSIONS

BURNER MODEL	FRAME SIZE	GAS INPUT (MBH)	#2 OIL INPUT (GPH)	BHP @ 80% EFF.	MOTOR HP	SEPARATE COMP. MODULE MOTOR HP 3 PH.	BLOWER MOTOR VOLT/ PH 60 HZ.	FURNACE PRESS. ("W.C.)	GAS PRESSURE REQUIRED (PSI)
XLLG-378	1	37,800	270	900	30	15	230/460/3	4.5	10
XLLG-420	1	42,000	300	1,000	40	15	460/3	5.4	10
XLLG-462	1	46,200	330	1,100	50	15	460/3	5.6	10
XLLG-504	1	50,400	360	1,200	50	15	460/3	5.7	10
XLLG-546	2	54,600	390	1,300	60	15	460/3	6.1	10
XLLG-588	2	58,800	420	1,400	60	15	460/3	6.3	10
XLLG-630	2	63,000	450	1,500	75	15	460/3	7.1	10

NOTES:

- Gas input based on natural gas at 1,000 Btu/cu.ft. and 0.60 gravity.
- Gas pressure based on zero furnace pressure. For total pressure at manifold, add furnace pressure.
- Oil input based on No. 2 oil at 140,000 Btu/gal.
- Boiler overall efficiency of 80% estimated.
- Blower wheel and motor HP is based on altitude up to 2,000 ft. above sea level. For higher altitude or 50 Hz. applications, consult factory.
- Firing at higher furnace pressures de-rates the burner by approximately 5% per 1/2" of additional pressure, consult factory.
- Other motor voltages available, consult factory.



STANDARD CONFIGURATION

BURNER MODEL	D	E	F	G	H	J	K	L	M	N	P	Q
SIZE 1	137 1/4	83 3/8	26 5/8	24	31 3/4	17 5/8	34	6 5/8	28	50 7/8	70 1/8	23 3/8
SIZE 2	144 1/2	90 1/2	28	25 1/2	33 3/8	17 5/8	33 1/8	7	30 1/2	50 7/8	70 1/8	27

BURNER MODEL	R	S	T	U	V	W	DD	EE	FF	GG	HH
SIZE 1	110 3/4	72 3/8	38 1/2	3 5/8	113 1/4	16 1/8	30	28 1/4	12	30°	1
SIZE 2	116 1/2	74 1/4	40 1/2	4 1/2	122 3/4	19 3/8	41	39	12	30°	1