

MODEL CBEX ELITE 900 - 1200 HP



Dimensions and Ratings

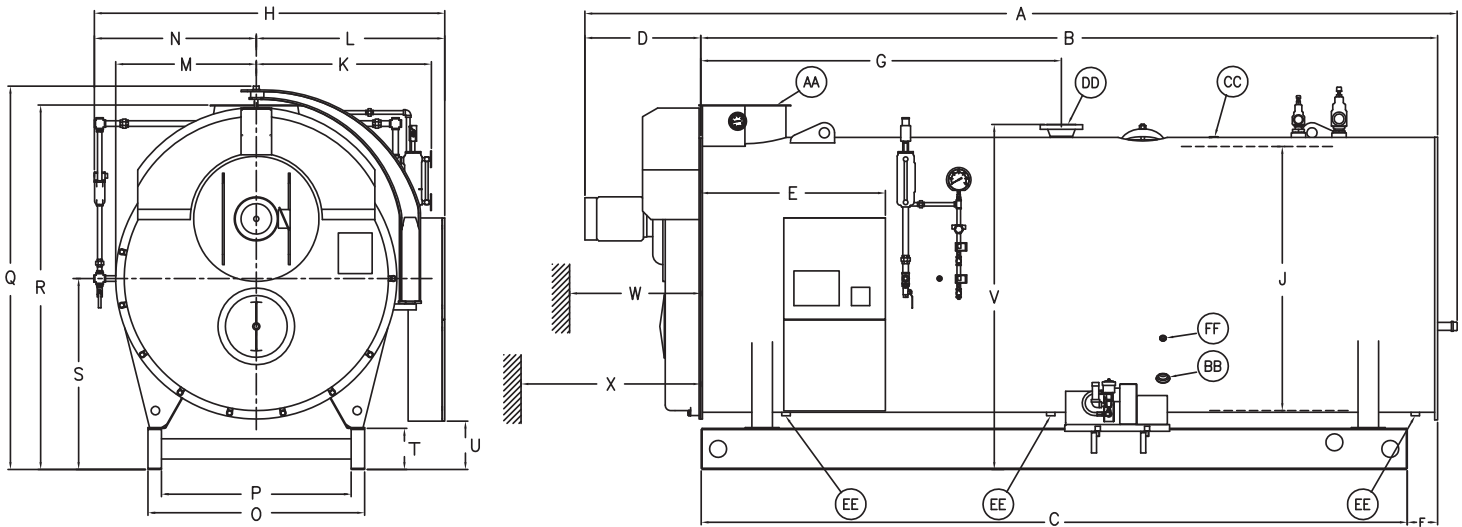
Boiler Ratings CBEX Elite 900-1200 HP

BOILER H.P.	900	1000	1100	1200
RATINGS - SEA LEVEL TO 700 FT.				
Rated Capacity (lbs-steam/hr from and at 212 OF)	31050	34500	37950	41400
Btu Output (1000 Btu/hr)	30128	33475	36823	40170
APPROXIMATE FUEL CONSUMPTION AT RATED CAPACITY BASED ON NOMINAL 82% EFFICIENCY				
Light Oil gph (140,000 Btu/gal)	262.4	291.6	320.8	349.9
Gas CFH (1000 Btu)	36741	40823	44905	48988
Gas (Therm/hr)	367.4	408.2	449.1	489.9
POWER REQUIREMENTS - SEA LEVEL TO 700 FT. (60 HZ)				
Blower Motor hp (30 ppm) ^A	100	100	100	125
Blower Motor hp (9 ppm/5 ppm) ^A	75	100	100	125
Oil Pump Motor, No. 2 Oil	1-1/2	1-1/2	1-1/2	1-1/2
Air Compressor Motor hp (No. 2 Oil firing Only)	15	15	15	15
BOILER DATA				
Heating Surface sq-ft. (Fireside)	3219	3594	3609	3751

NOTES:

A. Blower motor size for boiler operating pressures 125 psig and less, contact your local Cleaver-Brooks authorized representative for higher pressures and altitude.

Dimensions CBEX Elite 900-1200 HP



Dimensions in inches

BOILER H.P.	DIM	900	1000	1100	1200
LENGTHS					
Overall Length (60 ppm system)	A	N/A	N/A	N/A	N/A
Overall Length (30 ppm system)	A	330.5	335.5	369.5	385
Overall Length (9 ppm/5 ppm system)	A	330.5	335.5	375	385
Shell	B	260.5	264.5	299	309
Base Frame	C	251	255.5	289.5	299.5
Front Head Extension (60 ppm system)	D	N/A	N/A	N/A	N/A
Front Head Extension (30 ppm system)	D	54	54	54	59.5
Front Head Extension (9 ppm/5 ppm system)	D	54	54	59.5	59.5
Front Ring Flange to Panel	E	57.5	57.5	57.5	57.5
Rear Ring Flange to Base	F	10.25	10.25	10.25	10.25
Shell Flange to Steam Nozzle	G	134	130	140	150
WIDTHS					
Overall Width	H	133	133	133	133
I.D. Boiler	J	106	106	106	106
Center to Water Column	K	64	64	64	64
Center to Panel	L	69.5	69.5	69.5	69.5
Center to Lagging	M	55.5	55.5	55.5	55.5
Center to Auxiliary LWCO	N	63.5	63.5	63.5	63.5
Base Outside	O	74.75	74.75	74.75	74.75
Base Inside	P	61.75	61.75	61.75	61.75
HEIGHTS					
Overall Height	Q	147.5	147.5	147.5	147.5
Base to Vent Outlet	R	138	138	138	138
Base to Boiler Centerline	S	71	71	71	71

BOILER H.P.	DIM	900	1000	1100	1200
Height of Base Frame	T	12	12	12	12
Base to Bottom of Panel	U	18	18	18	18
Base to Steam Outlet	V	130.5	130.5	130.5	130.5
BOILER CONNECTIONS					
Feedwater Inlet (Both Sides)	BB	3	3	3	3
Surface Blowoff	CC	1	1	1	1
Steam Nozzle (300# ANSI Flange)	DD	8	10	10	10
Blowdown-Front & Rear	EE	2	2	2	2
Chemical Feed	FF	1	1	1	1
VENT STACK					
Vent Stack Diameter (Flanged)	AA	32	32	32	32
MINIMUM CLEARANCES					
Front Door Swing	W	112	112	112	112
Tube Removal - Front Only	X	183	187	221	231
MINIMUM BOILER ROOM LENGTH ALLOWING FOR DOOR SWING AND TUBE REMOVAL:					
Thru Window or Door		414	419	453	463
Front of Boiler		485	494	562	582
WEIGHTS IN LBS					
Normal Water Capacity		35,800	36,000	37,200	38,650
Approx. Shipping Weight - (150psig)		51,900	54,200	57,300	58,850

NOTES:

Accompanying dimensions, while sufficiently accurate for layout purposes, must be confirmed for construction by certified dimension diagram/drawing. All connections are threaded unless otherwise indicated.

