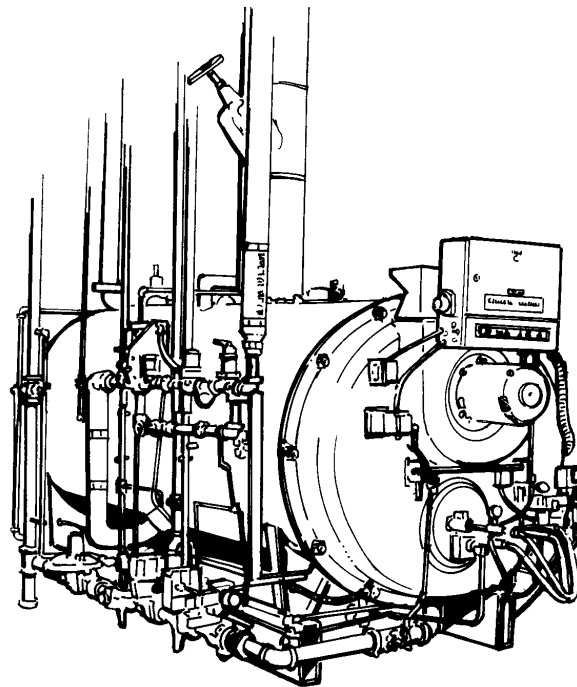




---

## MODEL CB OHIO SPECIAL BOILERS Dimensions and Ratings 100S-225S HP

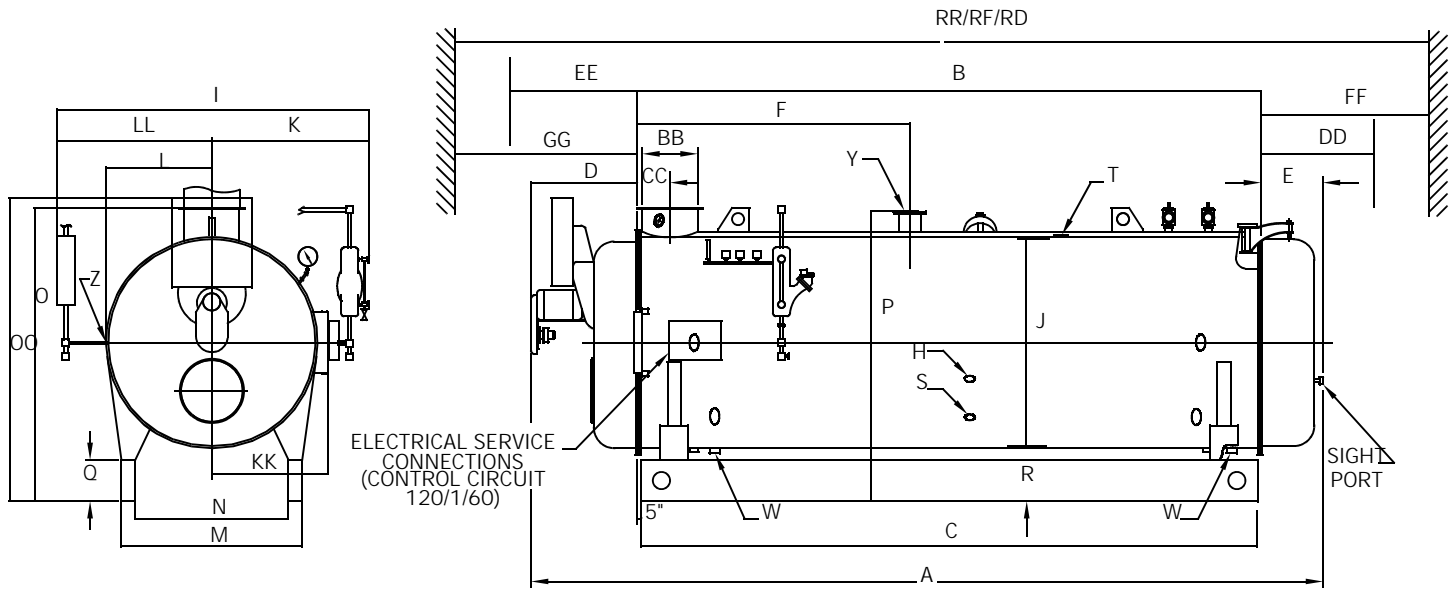


**Table 1. Model CB Ohio Special Steam Boiler Ratings**

BOILER HP	100S	125S	150S	175S	200S	225S
WEIGHT IN POUNDS						
Normal Water Capacity	4625	7000	7000	8500	8500	8500
Approx Wt -15 psig	7800	9300	9300	12600	12600	12600
Approx Wt -150 psig	8500	9900	9900	13500	13500	13500
Approx Wt - 200 psig	9000	10500	10500	14200	14200	14200
Water Capacity Flooded	5420	8673	8673	10485	10485	10485
RATINGS SEA LEVEL TO 3000 FT						
Steam - lbs/hr (212°F)	3450	4313	5175	6038	6900	7763
Btu Output (1000 Btu/hr)	3348	4184	5021	5858	6695	7532
APPROXIMATE FUEL CONSUMPTION AT RATED CAPACITIES						
Light Oil gph (140,000 Btu/gal)	29.9	37.4	44.8	52.3	59.8	67.2
Nat Gas CFH (1000 Btu/cu-ft)	4184	5230	6277	7323	8369	9415
Nat Gas -Therms/hr	41.8	52.3	62.8	73.2	83.7	94.1
POWER REQUIREMENTS - ELECTRIC (60 Hz)						
Blower Motor, hp (all models)	3	5	7-1/2	10	15	20
Oil Pump Motor, hp (No. 2 Oil)	1/3	1/2	1/2	1/2	1/2	1/2
Air Compressor Motor hp (Oil Fired Only)	2	Air Compressor Belt Driven From Blower Motor				

NOTES:

1. Standard Voltage is 230 or 460/3/60 Hz.
2. Burner control circuit Voltage is 115/1/60 Hz,1/2 kVA load.
3. Side mounted air compressor (3 hp motor) recommended for 200S and 225S.



MODEL HP	DIM	100S	125S	150S	175S	200S	225S
LENGTH							
Overall	A	171-1/2	163-1/2	163-1/2	200-1/2	204-1/2	207-1/2
Shell	B	131	113	113	149	149	149
Base Frame	C	130	100	100	136	136	136
Front Head Extension (Approx)	D	22	31	31	32	36	39
Rear Head Extension	E	18-1/2	19-1/2	19-1/2	19-1/2	19-1/2	19-1/2
Flange to Nozzle (15 psig)	F	65-1/2	53	53	74.5	74.5	74.5
Flange to Nozzle (150 psig)	F	72.5	53	53	66	66	66

Table 2. Model CB Ohio Special Steam Boiler Dimensions - Sheet 1 of 2

MODEL HP	DIM	100S	125S	150S	175S	200S	225S
WIDTH							
Overall	I	73	85	85	85	85	85
ID Boiler	J	48	60	60	60	60	60
Center to Water Column	K	39	45	45	45	45	45
Center to Outside Hinge	KK	29	35	35	35	35	35
Center to Lagging	L	27	33	33	33	33	33
Center to Auxiliary LWCO	LL	34	40	40	40	40	40
Base-Outside	M	37-5/8	52-1/2	52-1/2	52-1/2	52-1/2	52-1/2
Base-Inside	N	29-5/8	44-1/2	44-1/2	44-1/2	44-1/2	44-1/2
HEIGHT							
Overall	OO	78-3/4	86	86	86	86	86
Base to Vent Outlet	O	70	85	85	85	85	85
Base to Steam Outlet	P	66	77	77	77	77	77
Base Frame	Q	12	12	12	12	12	12
Base to Bottom Boiler	R	16	16	16	16	16	16
CONNECTIONS							
Chemical Feed	H	1	1	1	1	1	1
Feedwater, Right & Left	S	1-1/4	1-1/2	1-1/2	1-1/2	1-1/2	1-1/2
Auxiliary Connection	Z	1	1	1	1	1	1
Steam Nozzle (15 psig) <sup>A</sup>	Y	8 FLG	8 FLG	8 FLG	8 FLG	10 FLG	10 FLG
Steam Nozzle (150 psig) <sup>B</sup>	Y	4 FLG	4 FLG	4 FLG	4 FLG	4 FLG	4 FLG
Drain-Front & Rear (15 psig only)	W	1-1/2	1-1/2	1-1/2	2	2	2
Blowdown-Front & Rear (150 psig)	W	1-1/4	1-1/2	1-1/2	1-1/2	1-1/2	1-1/2
Surface Blow (150 psig only)	T	1	1	1	1	1	1
Vent Stack Dia. (Flanged)	BB	12	16	16	16	16	16
Flange to Center Vent	CC	7	9	9	9	9	9
CLEARANCES							
Rear Door Swing	DD	55	32	32	32	32	32
Front Door Swing	EE	55	67	67	67	67	67
Tube Removal, Rear	FF	123	103	103	139	139	139
Tube Removal, Front	GG	113	91	91	127	127	127
Min Room Length for Rear Tube Removal	RR	309	283	283	355	355	355
Min Room Length for Front Tube Removal	RF	299	236	236	308	308	308
Tube Removal thru Door	RD	241	212	212	248	248	248

NOTE: Accompanying dimensions, while sufficiently accurate for layout purposes, must be confirmed for construction by certified dimension prints.  
 A. Flanged 150 psig ANSI  
 B. Flanged 300 psig ANSI

Table 2. Model CB Ohio Special Steam Boiler Dimensions - Sheet 2 of 2