

PUMP KIT ASSEMBLY

G:\PUBLIC\WP\o-Computers-Software\Cleaver-Brooks submittals\Cleaver-Brooks submittals dwgs used to convert to pdf\comp-11010-pumps-jac-1408 18.27

Bul.# 11010

PUMP KIT ASSEMBLY

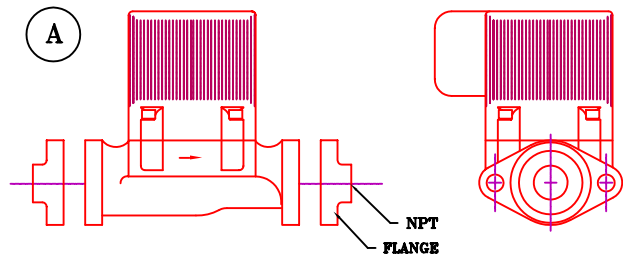
P/N	NPT.	A	B	C	D	E	F
965010	1"	400020	420060	410060	430042	461240	467055
965020	1 1/2"	400030	420080	410080	430055	461240	467055
965030	2"	400040	420090	410090	430055	461240	467055
965040	2"	400080	420080	410090	430055	461240	467055
965050	1 1/4"	400130	420080	410080	430045	461240	467055

A. CIRCULATING PUMP

SEE BUL.#10020 FOR PERFORMANCE GRAPHS.

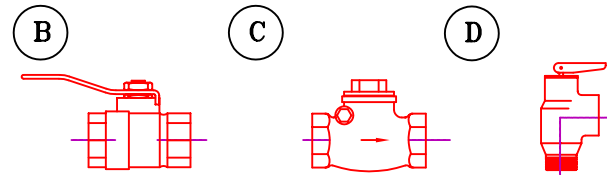
P/N	WGT.	H.P.	VOLTS	AMPS
400020	12	1/12	115	1.85
400030	15	1/6	115	2.15
400040	44	1/12, 1/4, OR 1/3	115/220	4.6
400080	49	1/8, 1/2 OR 3/4	115/220	8.5
400130	42	1/3 *	115/220	4.6

* HIGH TEMP (MAX. INLET TEMP 330°)



B. FLOW CONTROL VALVE, Brass

P/N	NPT
420050	3/4"
420080	1"
420080	1 1/2"
420090	2"



C. CHECK VALVE, Brass

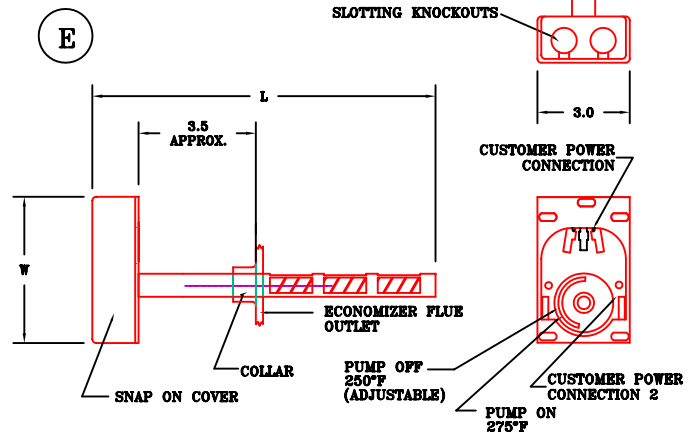
P/N	NPT
410050	3/4"
410060	1"
410080	1 1/2"
410090	2"



D. RELIEF VALVE, Bronze

P/N	INLET	OUTLET	PSIG
430042	3/4"	3/4"	150*
430045	3/4"	1 1/4"	150
430050	3/4"	1 1/4"	200
430055	3/4"	1 1/4"	250
430056	3/4"	1 1/4"	300
430060	1"	1 1/2"	150
430062	1"	1 1/2"	250

* TEMPERATURE 210°F ● 150 PSIG.



E. PUMP CONTROLLER

P/N	L	W
461240	13.25"	4.25"

F. (2) THERMOMETERS, Gas °F

P/N	D	L	TEMP°F
467055	3"	7.0"	750
467060	3"	7.0"	1000
467095	3" *	9.7"	750
467096	3" *	9.7"	1000
467200	5"	13.0"	750
467205	5"	13.0"	1000
467325	5" *	15.7"	750
467330	5" *	15.7"	1000

