

**ProFire XLLG Series Product Information**  
**Horizontal Configuration**  
**Combination Gas / #2 Oil**  
**67.2 - 92.4 MMBtu**



The XL series combination gas/oil burner is a forced draft packaged burner system. A backward curved impeller provides combustion air for various furnace pressures or high altitude applications. The rear-access cover is hinged for convenient inspection or service of the firing head components. XL series combination gas/oil burners change from one fuel to the other by manually retracting the oil gun, and with the simple flip of a switch. No burner modifications or readjustments are required when changing from one fuel to the other. Compressor modules and main gas train components are shipped loose.

**STANDARD EQUIPMENT**

- 120/1/60 Control Circuit
- Panel Signal Lights: Power On, Main Fuel, Ignition, and Flame Failure
- Burner Mounted Junction Box w/Remote Panel
- Combustion Air Proving Switch
- Air Dampers w/Silencer
- Burner Mounting Flange
- Gas-Electric Ignition
- Hinged Rear Access Cover
- Fuel Changeover Switch



**SERIES FEATURES**

S = STANDARD  
 O = OPTIONAL  
 N/A = NOT AVAILABLE

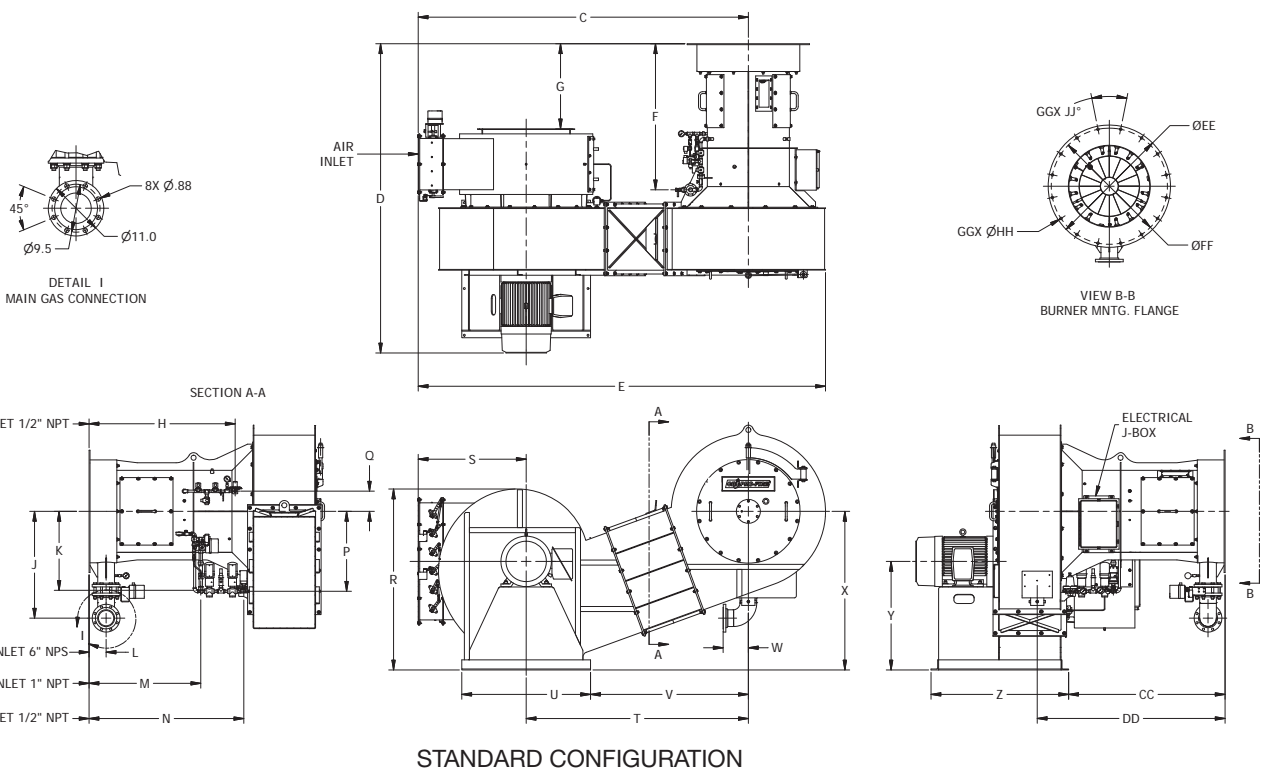
	XLLG-672	XLLG-756	XLLG-840	XLLG-924
Flame Safeguard with UV Scanner (IR Scanner Available)	S	S	S	S
1800 RPM Combustion Fan	S	S	S	S
Full Modulation Firing	S	S	S	S
Parallel Positioning System	S	S	S	S
Dry Oven	O	O	O	O
O <sub>2</sub> Trim	O	O	O	O
Variable Frequency Drive (VFD)	O	O	O	O
High & Low Gas Pressure Switches	S	S	S	S
Normally Open (N.O.) Vent Valve	S	S	S	S
Main Gas Regulator & (2) Gas Shutoff Cocks	S	S	S	S
Gas Flow Control Valves Mounted on Burner Piping	S	S	S	S
2-Way Motorized Oil Valve w/ Proof of Closure (POC)	S	S	S	S
Burner Mounted Oil Flow Control Valve	S	S	S	S
Separately Mounted Air Compressor Module	S	S	S	S
3-Way Regulating Valve w/Relief Valve Upstream of Burner Oil Piping	S	S	S	S
High & Low Oil Pressure Switch	S	S	S	S
Atomizing Air Proving Switch & Fuel Oil Strainer (Shipped Loose)	S	S	S	S

# SPECIFICATIONS & DIMENSIONS

BURNER MODEL	FRAME SIZE	GAS INPUT (MBH)	#2 OIL INPUT (GPH)	BHP @ 80% EFF.	MOTOR HP	SEPARATE COMP. MODULE MOTOR HP 3 PH.	BLOWER MOTOR VOLT/ PH 60 HZ.	FURNACE PRESS. ("W.C.)	GAS PRESSURE REQUIRED (PSI)
XLLG-672	3	67,200	480	1,600	75	15	460/3	6.3	10
XLLG-756	3	75,600	540	1,800	75	15	460/3	6.6	10
XLLG-840	3	84,000	600	2,000	100	15	460/3	6.7	10
XLLG-924	3	92,400	660	2,200	100	15	460/3	6.8	10

**NOTES:**

- Gas input based on natural gas at 1,000 Btu/cu.ft. and 0.60 gravity.
- Gas pressure based on zero furnace pressure. For total pressure at manifold, add furnace pressure.
- Oil input based on No. 2 oil at 140,000 Btu/gal.
- Boiler overall efficiency of 80% estimated.
- Blower wheel and motor HP is based on altitude up to 2,000 ft. above sea level. For higher altitude or 50 Hz. applications, consult factory.
- Firing at higher furnace pressures de-rates the burner by approximately 5% per 1/2" of additional pressure, consult factory.
- 900-1,500 HP models are available, consult factory.
- Other motor voltages available, consult factory.



BURNER MODEL	C	D	E	F	G	H	J	K	L	M	N	P	Q	R	S
SIZE 3	130 3/4	122 1/2	161 3/8	58	33 3/4	58	42 3/8	31 3/8	6 7/8	44 3/8	61 3/8	31 3/4	8	71 3/4	42 7/8

BURNER MODEL	T	U	V	W	X	Y	Z	CC	DD	EE	FF	GG	HH	JJ
SIZE 3	88	51	62 1/2	10	62 7/8	43	54 1/2	62	74 1/2	48 1/2	46	16	1	22 1/2°